



Inner East Community Committee

Burmantofts & Richmond Hill, Gipton & Harehills,
Killingbeck & Seacroft

Meeting to be held REMOTELY

Wednesday, 17th March, 2021 at 6.00 pm

Councillors:

- | | | |
|--------------|---|--------------------------------|
| R Grahame | - | Burmantofts and Richmond Hill; |
| A Khan | - | Burmantofts and Richmond Hill; |
| D Ragan | - | Burmantofts and Richmond Hill; |
| S Arif | - | Gipton and Harehills; |
| A Hussain | - | Gipton and Harehills; |
| K Maqsood | - | Gipton and Harehills; |
| P Drinkwater | - | Killingbeck and Seacroft; |
| K Dye | - | Killingbeck and Seacroft; |
| D Jenkins | - | Killingbeck and Seacroft; |

Note to observers of the meeting:

To remotely observe this meeting, please click on the 'View the Meeting Recording' link which will feature on the meeting's webpage (linked below) ahead of the meeting. The webcast will become available at the commencement of the meeting.

<https://democracy.leeds.gov.uk/ieListDocuments.aspx?CId=997&MId=10269&Ver=4>





Agenda compiled by: Natasha Prosser 0113 37 88021
Governance Services Unit, Civic Hall, Leeds LS1 1UR

Head of Stronger Communities: Liz Jarmin Tel: 0113 37 89035

*Images on cover from left to right:
Burmantofts and Richmond Hill - Burmantofts stone; East End Park
Gipton & Harehills - Fairway Hill; Bankstead Park
Killingbeck & Seacroft – Seacroft Hospital clock; Seacroft village green*

A G E N D A

Item No	Ward/Equal Opportunities	Item Not Open		Page No
1			<p>CHAIRS OPENING REMARKS</p>	
2			<p>APPEALS AGAINST REFUSAL OF INSPECTION OF DOCUMENTS</p> <p>To consider any appeals in accordance with Procedure Rule 15.2 of the Access to Information Procedure Rules (in the event of an Appeal the press and public will be excluded)</p> <p>(*In accordance with Procedure Rule 15.2, written notice of an appeal must be received by the Head of Governance Services at least 24 hours before the meeting)</p>	
3			<p>EXEMPT INFORMATION - POSSIBLE EXCLUSION OF THE PRESS AND PUBLIC</p> <p>1 To highlight reports or appendices which officers have identified as containing exempt information, and where officers consider that the public interest in maintaining the exemption outweighs the public interest in disclosing the information, for the reasons outlined in the report.</p> <p>2 To consider whether or not to accept the officers recommendation in respect of the above information.</p> <p>3 If so, to formally pass the following resolution:-</p> <p style="padding-left: 40px;">RESOLVED – That the press and public be excluded from the meeting during consideration of the following parts of the agenda designated as containing exempt information on the grounds that it is likely, in view of the nature of the business to be transacted or the nature of the proceedings, that if members of the press and public were present there would be disclosure to them of exempt information, as follows:-</p>	

Item No	Ward/Equal Opportunities	Item Not Open		Page No
4			<p>LATE ITEMS</p> <p>To identify items which have been admitted to the agenda by the Chair for consideration</p> <p>(The special circumstances shall be specified in the minutes)</p>	
5			<p>DECLARATIONS OF DISCLOSABLE PECUNIARY INTERESTS</p> <p>To disclose or draw attention to any disclosable pecuniary interests for the purposes of Section 31 of the Localism Act 2011 and paragraphs 13-18 of the Members' Code of Conduct.</p>	
6			<p>APOLOGIES FOR ABSENCE</p> <p>To receive any apologies for absence</p>	
7			<p>OPEN FORUM</p> <p>In accordance with Paragraphs 4.16 and 4.17 of the Community Committee Procedure Rules, at the discretion of the Chair a period of up to 10 minutes may be allocated at each ordinary meeting for members of the public to make representations or to ask questions on matters within the terms of reference of the Community Committee. This period of time may be extended at the discretion of the Chair. No member of the public shall speak for more than three minutes in the Open Forum, except by permission of the Chair.</p> <p>In order to facilitate the Open Forum item whilst Community Committee meetings are being held remotely, the process has been adapted slightly, so that members of the public are invited to make written submissions in advance of the meeting on any matter which falls within the Community Committee's terms of reference. These will be read out by the Clerk under this agenda item and considered by the Community Committee.</p>	

Item No	Ward/Equal Opportunities	Item Not Open		Page No
8			<p>MINUTES OF THE PREVIOUS MEETING - 14 JANUARY 2021</p> <p>To confirm as a correct record the minutes of the previous meeting held Thursday 14th January 2021.</p>	7 - 14
9			<p>COMPASSIONATE CITY AWARDS UPDATE</p> <p>To receive a verbal update from three local groups who were recently recognised at the Compassionate City Awards for their work in the Inner East Community Committee.</p> <p>(Cover report attached)</p>	15 - 16
10			<p>CONNECTING LEEDS - TRANSPORT STRATEGY</p> <p>The report of the Director of City Development brings to members' attention details of the consultation on the draft Connecting Leeds Transport Strategy.</p> <p>(Report and Executive Summary attached)</p>	17 - 28
11			<p>INNER EAST COMMUNITY COMMITTEE - UPDATE REPORT</p> <p>The report of the Head of Stronger Communities brings to members' attention an update of the work which the Communities Team is engaged in, based on priorities identified by the Community Committee. It also provides opportunities for further questioning, or to request a more detailed report on a particular issue.</p> <p>(Report attached)</p>	29 - 64

Item No	Ward/Equal Opportunities	Item Not Open		Page No
12			<p>INNER EAST COMMUNITY COMMITTEE - FINANCE REPORT</p> <p>The report of the Head of Stronger Communities provides the Community Committee with an update on the budget position for the Wellbeing Fund, Youth Activity Fund, Capital Budget, as well as the Community Infrastructure Levy Budget for 2020/21.</p> <p>(Report attached)</p>	65 - 82
13			<p>DATES AND TIMES OF COMMUNITY COMMITTEE MEETINGS 2021/22</p> <p>The report of the City Solicitor requests Members to give consideration to agreeing the proposed Community Committee meeting schedule for the 2021/22 municipal year.</p> <p>(Report attached)</p> <p><u>Third Party Recording</u></p> <p>Recording of this meeting is allowed to enable those not present to see or hear the proceedings either as they take place (or later) and to enable the reporting of those proceedings. A copy of the recording protocol is available from the contacts named on the front of this agenda.</p> <p>Use of Recordings by Third Parties – code of practice</p> <ul style="list-style-type: none"> a) Any published recording should be accompanied by a statement of when and where the recording was made, the context of the discussion that took place, and a clear identification of the main speakers and their role or title. b) Those making recordings must not edit the recording in a way that could lead to misinterpretation or misrepresentation of the proceedings or comments made by attendees. In particular there should be no internal editing of published extracts; recordings may start at any point and end at any point but the material between those points must be complete. 	83 - 86

INNER EAST COMMUNITY COMMITTEE

THURSDAY, 14TH JANUARY, 2021

PRESENT: Councillor D Ragan in the Chair

Councillors S Arif, P Drinkwater, K Dye,
R Grahame, A Hussain, D Jenkins, A Khan
and K Maqsood

The Chair welcomed everybody to the remote meeting of the Inner East Community Committee. The Chair explained that internet connectivity may be an issue for some participants and suggested it may be appropriate to appoint a Vice Chair who could assume the Chair should the Chair lose connectivity. The Chair proposed that Councillor Salma Arif be nominated as the Vice Chair, the proposal was seconded, and upon being put to the vote the motion was passed.

49 Appeals Against Refusal of Inspection of Documents

There were no appeals.

50 Exempt Information - Possible Exclusion of the Press and Public

There was no exempt information.

51 Late Items

There were no formal late items. Supplementary information had been received in relation to Agenda Item 10, Domestic Violence and Abuse Update and Agenda Item 12, Finance Report. These had been published and distributed prior to the meeting.

52 Declarations of Disclosable Pecuniary Interests

There were no declarations of disclosable pecuniary interests.

53 Apologies for Absence

There had been no apologies for absence.

54 Open Forum

In order to facilitate the Open Forum item whilst Community Committee meetings are being held remotely, the process has been adapted slightly, so that members of the public are invited to make written submissions in advance of the meeting on any matter which falls within the Committee's terms of reference.

On this occasion, no submissions had been received.

55 Minutes of the Previous Meeting - 5 December 2019

RESOLVED – That the minutes of the previous meeting held on 5th December 2019, be approved as an accurate record.

Matters Arising

Minute 44, Poole estate development – a member from the Killingbeck and Seacroft ward, explained there had been meetings with developers (Strata and Keepmoat) to identify greenspace developments in the area. It was confirmed that proposals are being considered in terms of the Seacroft hospital site, with plans for a play area and to restrict motorbike access.

56 Wyke Beck Update

Jonathan Moxon, Flood Risk Manager was in attendance and provided the Community Committee with an update and presentation on the measures in place in the city to reduce flood risk, and in particular an overview of the Wyke Beck Valley Programme.

The Wyke Beck Valley Programme is a £4.7million package of works consisting of 3 projects in Leeds; Arthurs Rein, Killingbeck Meadows and Halton Moor. The programme aims to reduce flood risk to existing properties, support housing and economic growth, create new habitat and provide environmental improvements and improve amenity and quality of place. An overview was provided to members on why the Programme was needed, particularly for those residents in areas prone to flooding, such as the Dunhills.

An update on the 3 projects, were highlighted as follows:

- Arthurs Rein – the scheme involved transforming an underground storm drain into an open channel to help improve capacity and water flow. This scheme had many benefits including creating new habitat, to help connect residents to greenspace and wildlife and opportunities for housing developments;
- Killingbeck Fields – the scheme included a new flooding control structure and flood storage at Killingbeck Fields Local Nature Reserve. The scheme was designed to hold back and store flood water within the site. The scheme also included new ponds and seasonal wetlands, wildflower and wetland planting, improved paths and seating and interpretation boards.
- Halton Moor – work on this scheme included new trees, plants, seats and wildflowers as well as improved footpaths and interpretation panels to offer enhanced access and visitor experience. Funding was secured by working in liaison with partners such as the West Yorkshire Combined Authority and the Environmental Agency, in order to provide multiple benefits to the local area.

The Flood Risk Manager concluded by highlighted the positive benefits of each of the schemes in relation to the creation of jobs as a result of the programme, the number of new trees that will be planted across the catchment area and the addition of housing and additional green infrastructure.

Members' discussions included the following:

- Responsibility for maintenance of the Wyke Beck – it was noted that the overall responsibility of the Beck maintenance is the Environment Agency. However, in terms of the new flood risk assets, the council had attracted funding as part of the deal for maintenance moving forward and would last approximately 10 years. Parks and Countryside were already working in conjunction with the Yorkshire Wildlife Trust for all three sites;
- Concern that the schemes will attract anti-social behaviour – it was confirmed that the sites had already seen issues in terms of ASB, particularly from children. Each of the sites have been assessed and the appropriate measures have been put in place and will be monitored regularly in terms of the sites structure;
- Clarity on whether the jobs and apprenticeships had been created locally – There is ongoing work to strengthen requirements around recruitment, specifically in relation to local labour needing to be a preference. In terms of the wider job roles in the valley, these had been locally sourced;
- Clarity on the procedure for raising and lowering the flood defences for Killingbeck Fields – It was confirmed that this particular site was designed so that it can operate solely on its own, and was designed to let a set amount of water through. The only time the gate would need to be manually touched, would be for maintenance purposes.

The Chair thanked the Flood Risk Manager for his attendance and update.

RESOLVED – To note the contents of the verbal update.

57 Domestic Violence and Abuse Update

The Director of Communities and Environment submitted a report that introduced a verbal update and presentation on domestic violence and abuse in the Inner East Community Committee Area.

Sunita Jhamat, Domestic Violence Programme Officer was in attendance and delivered a PowerPoint presentation which provided an overview of:

- Key data related to reported domestic violence in the Inner East area, and the rest of the city. Data included Police Reports, Inner East comparisons by month, Incident Types, Leeds MARAC and Domestic Homicides in Leeds;
- The impact of Covid-19 on reports of domestic violence, with initial decline in reports due to access barriers for front door teams – resulting in limited support available to victims and perpetrators;

- A snapshot of current projects and interventions in the Inner East area to address issues including delivery of the Quality Mark, work of the Local Care Partnerships (LCP), support through local GPs and the Early Help Hub;
- The implications of the Domestic Violence Bill due to be introduced in 2021 and the new governance arrangements in Leeds as a result of that;
- Moving forward, opportunities for Community Committee engagement and raising awareness in the Inner East area.

Members' discussion included the following:

- Members noted the good work of the Seacroft LCP in decreasing reported domestic violence in the Inner East area. The importance of replicating good practise across the other LCPs in the area was highlighted. In response, it was noted that the Seacroft LCP had chosen domestic violence as their theme to work on, and that work to replicate this would be looked at;
- In response to a query regarding the number of homicides related to the Inner East area, it was confirmed that the number would be provided to Members in due course;
- In recognising communities with language barriers, Members sought clarity on the mechanisms in place to support the Gypsy Roma Traveller community. In responding, it was acknowledged that there was high prevalence in the Inner East area, particularly in the Clifton and Nowells area and Harehills. It was confirmed that the Gypsy and Roma Traveller Team for that area had been working towards their Quality Mark, and some staff had received training on how to identify signs of domestic violence. Whilst the training had stopped due to Covid-19 and staff management issues, the Domestic Violence Programme Officer would seek to ensure training would be re-started;
- Members highlighted the importance of Identifying organisations to apply for the Quality Mark, to help better support victims of domestic violence across the Inner East area.

The Head of Stronger Communities reassured members that work with Safer Leeds included identifying local businesses to apply for the Quality Mark. Additional areas of work included, working with younger children who may have been affected by domestic violence and replicating good practice across LCPs in the Inner East area.

The Chair thanked Sunita for her attendance, work and information shared with Members.

RESOLVED – To note the contents of the report and verbal update.

58 Inner East Community Committee - Update Report

The report of the Head of Stronger Communities updated Members on the work which the Communities Team are engaged in, based on priorities

identified by the Community Committee. It also provided opportunities for further questioning, or to request a more detailed report on a particular issue.

This report also provided updates on some of the key activities between Community Committee meetings and functions delegated to Community Committees, Community Champion roles, community engagement, partnership and locality working.

The following were in attendance for this item:

- Ruth Tiernan, Localities Officer
- Ian Kenning, Localities Manager
- Suzanne Hardy, Service Manager Environmental Services
- Darren De Souza, Community Health Development Manager, Mentally Healthy Leeds

The Service Manager (Environmental Services) provided a summary of the work undertaken by the Cleaner Neighbourhoods Team. It was noted that data set out at point 11 of the submitted report had now been updated, although the trends remained the same. The following information had been highlighted:

- Fly tipping reporting across all of the Inner East areas had decreased;
- Bulky collections reporting had increased slightly;
- Enforcement Officers have been particularly working in Harehills on the waste in gardens;
- Courts have resumed services, and there has been many prosecutions;
- Clean up events in the Burmantofts and Richmond Hill ward;
- The majority of services are running as usual;
- Close liaison with Highways on gritting streets, with focus on Covid-19 vaccination centres.

Members had requested the following information:

- Clear and comparative data showing key areas for reporting and referrals over the last 3 months;
- The location and overall number of grit bins. It was requested that the Head of Stronger Communities liaise with the Highways Department to receive this information.

The Community Health Development Manager provided members with an update on the Touchstone Loves Food project, and data in relation to food distribution and supply. Members heard that 160,000 meals had been delivered city wide. In relation to the Inner East Committee Area, 50,000 had been delivered to Burmantofts and Richmond Hill, 21,600 to Gipton and Harehills and 2,800 to Killingbeck and Seacroft – 36% of the work had been based in Inner East Leeds. Mental health support has also been provided, with approximately 200 hours of intensive telephone support to residents.

The Chair thanked Darren and his organisation, with particular mention to the support provided to people across the communities who need it the most.

The Localities Manager in attendance, provided an update on a new funding package funding by Government, in relation to the Community Care Volunteering Hubs. It was confirmed that funding will sustain the hubs up until 30 June 2021, and the Inner East Committee Area in particular would receive £30,000 per hub, and additional funding for food. In addition to this, Voluntary Action Leeds are looking at doing a piece of work around coordinating the hubs to provide respite care and food coordination.

RESOLVED –

- a) To note the contents of the report and information provided at the meeting;
- b) Requested that information in relation to comparative data showing key areas for reporting and referrals, and the location and number of grit bins be circulated to Committee members.

59 Inner East Community Committee - Finance Report

The report of the Head of Stronger Communities provided the Community Committee with an update on the budget position for the Wellbeing Fund, Youth Activity Fund, Capital Budget, as well as the Community Infrastructure Levy Budget for 2020/21.

Members were informed of the following points:

- Paragraphs 17 – 19 provided an update on the Wellbeing Fund. A full breakdown of projects was provided at Table 1. The total revenue funding available to the Community Committee for 2020/21 is £215,393.93, with a remaining balance of £43,251.69;
- Members were requested to consider Wellbeing applications in relation to Lincoln green planters, 2 Way Street, Denbeigh Trees, Virtual Hubs, Temporary CCTV at Haselwood Drive, Premier League KICKS and Project Development Officer. Members were in agreement to approve these applications – a member requested details of the job post for the Project Development Officer. It was confirmed that this be circulated to all Community Committee members;
- Since the last consultative meeting on the 28th September 2020, the following projects had been approved by DDN:
 - Community Food Share Project
 - Nowell Mount Hub Furniture & Equipment
 - Life Connections After School Club
 - Zoom for Fun, Packages for One
- Since the last consultative meeting on the 28th September 2020, the following project had been deferred:
 - Streetworks Soccer – Ebor Gardens Football £4,900 (Wellbeing)
- An update was provided on Burmantofts Men’s Wellbeing and Social Group;
- Youth Activities Fund updates were provided at paragraphs 33 – 35. Balances and projects were set out at Table 2 of the report;
- Paragraph 39, Table 4 of the report outlined projects that have been approved through the 20k ward based Wellbeing budget set aside to

support the local community through the Covid-19 pandemic. It was noted that an injection of £30,000 had been received from Government, and would be reflected at the upcoming March meeting;

- Members were requested to consider projects from the Capital allocation, in relation to Seacroft Gardens Playground and Cycling Opportunities. Members were in agreement to approve these applications;
- The CIL balance was £71,961.19 with the CIL allocation outlined in Table 6.
- Table 7 and 8 of the report detailed projects not yet started due to the pandemic.

RESOLVED – To note details of the following:

- a) Wellbeing Budget position (Table 1)
- b) Youth Activities Fund (Table 2)
- c) Small Grants & Skips Budget (Table 3)
- d) Covid-19 ward based Budget (Table 4)
- e) Capital Budget (Table 5)
- f) Community Infrastructure Levy Budget (Table 6)
- g) Wellbeing projects funded by the Community Committee that have not yet started (Table 7)
- h) Youth Activities Fund projects funded by the Community Committee that have not yet started (Table 8)

The Community Committee approved the following applications:

- Lincoln Green Planters (Wellbeing) - £1,390.09
- 2 Way Street (Wellbeing) - £1,528.67
- Denbeigh Trees (Wellbeing) - £1,034
- Virtual Hubs (Wellbeing) – £2,800.00
- Temporary CCTV at Haselwood Drive (Wellbeing) - £1,488
- Premier League Kicks (Wellbeing) - £10,000
- Project Development Officer (Wellbeing) - £30,000

- Seacroft Gardens Playground (Capital) - £6,000
- Cycling Opportunities (Capital) - £8,500

60 Date and Time of next meeting

RESOLVED – To note the date and time of the next meeting as 17th March 2021, at pm.

(The meeting concluded at 20:00)

This page is intentionally left blank



Report of: Head of Stronger Communities

Report to: Inner East Community Committee

Report author: Localities Officer: Ruth Tiernan

Tel: 0113 5351085

Date: 17th March 2021

To note

Title: Inner East Community Committee

Purpose of report

1. To provide the Inner East Community Committee with a verbal update from three local groups who were recently recognised at the Compassionate City Awards for their work in the Inner East Community Committee area.

Main issues

2. The verbal report is provided at the specific request of the Inner East Community Committee.

Recommendations

3. The Inner East Community Committee is asked to note the contents of the verbal update from three local community groups that were recently recognised at the Compassionate City Awards. A verbal update on their areas of work will be provided by Nowells Community Group, PAFRAS and DAMASQ.

This page is intentionally left blank



Report of: Martin Farrington - Director of City Development

Report to: Inner East Community Committee

Report author: Finn Campbell

Date: 17.03.2021

To note

Inner East Community Committee – Draft Connecting Leeds Transport Strategy – Consultation

Purpose of report

1. To bring to members' attention details of the consultation on the draft Connecting Leeds Transport Strategy.

Overview

2. The draft Connecting Leeds Transport Strategy details how we are going to achieve our vision for Leeds, "to be a city where you don't need a car". The strategy outlines the key challenges and opportunities facing the city, our "big moves" and targets for 2030 in order to achieve the city wide vision, support the three overarching objectives to tackle Climate Change, deliver Inclusive Growth and improve Health and Wellbeing.
3. In order to realise our vision, meet our objectives and continue to deliver transformational change we need to work with individuals and businesses, regional bodies including the West Yorkshire Combined Authority and Transport for the North as well as Central Government.
4. It is clear however that these actions alone will not be enough to meet the scale of the climate emergency challenge facing us all and that further measures need to be considered as part of the Transport Strategy's development. The draft strategy therefore presents options to allow the continuation of our transport conversation with everyone in the city to agree the Connecting Leeds Transport Strategy.

About the consultation

5. This consultation is an opportunity for everyone to inform the final strategy and join the conversation to shape transport policy.
6. A copy of the executive summary for the strategy is attached to this report. Full copies of the report and online questionnaire are available here: www.leeds.gov.uk/transportconversation. As part of the consultation process a webinar series has been launched to discuss topics of the strategy in more detail. All sessions are free and can be joined via a computer, smartphone or landline number. Further details can be found on the above address.
7. In addition to the webinars, we will be attending all community committees over the next couple of months as well as dedicated sessions with seldom heard and equality groups. Printed copies of the strategy and questionnaire are available on requests and are supplied with a freepost return envelope. These can be requested via email at transport.strategy@leeds.gov.uk.
8. The consultation is live until Friday 26th March 2021.

Inner East Area

9. The draft strategy sets out our proposed approach to transport policy for the whole city. Whilst the strategy is not spatially defined, policies and measures detailed in the document and subsequent action plans will cover the Inner East Area.
10. The consultation on the draft strategy is an opportunity to highlight issues affecting the local area.

Recommendations

11. The Inner East Community Committee members are requested to note the contents of this report and the attached Executive Summary of the draft Transport Strategy and contribute to the live consultation.

Connecting Leeds

TRANSFORMING TRAVEL



Page 19



Connecting Leeds **Transport Strategy**

Executive Summary

Foreword

Our ambition for Leeds is to have a strong economy within a compassionate city.

To achieve this goal we are committed to delivering the priorities set out in our Inclusive Growth and Health and Well-Being Strategies, and doing all that we can to tackle climate change. The extent to which we are able to deliver success in these areas will be influenced by the action we take to transform mobility and connectivity in the city, the region and wider north.



Page 20 We are a city ready to move forward together - sitting proudly at the heart of the Northern Powerhouse. With the arrival of High Speed 2 and Northern Powerhouse Rail transforming our intercity connections we need to ensure that mobility in Leeds in the next decade supports sustainable economic development for everyone. Delivering transformational economic growth not only in Leeds but across the city region and the north; creating a strong labour market with increased access to jobs and talent and opportunities for everyone is at the heart of our strategy.

Over the last few years we have seen significant transport investment which has made our city easier to walk, cycle and travel by public transport in. At the same time, the effect of overdependence on private cars on us, our families

and communities has become ever clearer. It has contributed to an increase in poor public health across our city, with streets that can often be polluted and unwelcoming places to live, walk or cycle. It is also bad for business with millions of pounds of lost productivity caused by congestion.

The Covid-19 pandemic has changed the way we live our lives, from how and where we work to how we spend our leisure time. Whilst we do not know the long term effects that this will have on our lives we do know that people want to walk and cycle more.

Our vision for Leeds is for a city where walking, cycling and green public transport become the most appealing, practical and best value choices for many more journeys. Where streets are attractive spaces for everyone to enjoy.

This strategy outlines how we aim to put walking, cycling and green public transport infrastructure first, the challenges we face as a city but also the opportunities there are to continue to transform travel in Leeds. The strategy will also set out big moves and how we are going to deliver the change required.

With the Climate Emergency declaration, how we manage and plan transport has important implications for our streets, public places, and future growth as a city but most importantly for everyone, who lives, works or travels in Leeds. We have started to take action to address the levels of congestion, crowding and unreliability on our transport network. However, there is more that can be done to improve everyone's experience of travel in our city.

There is no single solution. We need to continue to get people to move away from their cars to deliver an affordable, reliable, safe and zero carbon public transport network for the city which supports streets for people and unlocks the power of transport for a fairer, greener and more prosperous Leeds.

Councillor Judith Blake. Leader Leeds City Council



Executive Summary

This executive summary provides an overview of the draft Connecting Leeds Transport Strategy. It outlines our vision, objectives and big moves which combined will support the inclusive growth strategy, climate emergency ambition and health and wellbeing strategies.

Our Vision

Our vision for Leeds is to be a city where **you don't need a car.**

Where everyone has an **affordable zero carbon choice** in how they travel.

We want to **Connect Leeds, Connect Communities, and Connect Businesses** together in the most sustainable ways.

This means a city:

Where walking and cycling are the first choice for short journeys, creating safe and healthy environments where active travel is prioritised and road danger is eliminated;

With a fully integrated low carbon transport network with a network of modes – each of them accessible, viable and sustainable, which together will connect everybody with everything. By reducing transport's damaging impact on the environment, we will support Leeds commitment to becoming a carbon neutral city by 2030.

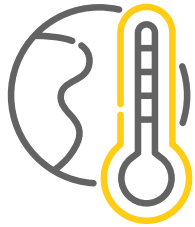
With decreased car dependence, with a shared go anywhere active and public transport network. That enables people to make choices that are right for them by providing smart, reliable, real time, multi-modal travel information, or making use of technology to decide not to travel at all.

With efficient land use for a well-connected productive city centre, moving more people not vehicles – prioritising mass transit, buses and active modes of travel.

That enables everyone to have equal access to the same opportunities. Where the cost of travel is reduced and people need to travel less.

The Objectives

We want to ensure economic opportunities are available to everyone, create a healthy and caring city for all and through a range of travel choices address the climate emergency, by moving away from personal car ownership, towards a shared, go anywhere low carbon transport network. To support our vision for Leeds we have three over-arching objectives in the transport strategy.



TACKLING CLIMATE CHANGE

Climate change is one of the greatest challenges we face globally and as a major city we have a key role to play. We declared a Climate Emergency in 2019 and pledged to make Leeds carbon neutral by 2030. In order to meet our 2030 target we must persuade people to adopt more sustainable travel choices by:

- ❑ Reducing the need for travel and the number of car journeys, especially at peak times
- ❑ Encouraging people to choose active travel and public transport
- ❑ Improving the efficiency of the transport network and make better use of our road space
- ❑ Encouraging the uptake of zero emission vehicles in freight, public and private transport



DELIVERING INCLUSIVE GROWTH

Ensuring that as Leeds continues to grow, that this is inclusive and benefits all our citizens and communities. The Leeds Inclusive Growth strategy sets out 12 big ideas to encourage inclusive growth. In order to support the delivery of inclusive growth and make Leeds an attractive city for business to grow and invest in, we are going to:

- ❑ Support individuals access more employment opportunities through a comprehensive transport network
- ❑ Develop and regenerate places through continued investment in transport infrastructure
- ❑ Improve productivity by investing in a more time and cost efficient transport system
- ❑ Lower the cost of mobility, ensuring transport is affordable for everyone



IMPROVING HEALTH AND WELLBEING

The Health and Wellbeing strategy sets out 12 priority areas to help Leeds become the best city for health and wellbeing. "We want Leeds to be the most active city in England" and our priority is to get more people active more often. To improve health and wellbeing we are going to:

- ❑ Ensure walking and cycling are the first choice for the shortest journeys improving physical health
- ❑ Reduce the negative effects of transport on our local communities, improving air quality and reducing CO2 Emissions
- ❑ Help make Leeds the best city to grow old in and a child friendly city through making streets accessible to all
- ❑ Eliminate road danger by adopting a Vision Zero approach to road accidents

Big Moves

We have identified six big moves that will be the focus of the Transport Strategy. We believe these six big moves will move us towards achievement of our vision, objectives and targets.

Our Big Moves are supported by 12 policy areas, it is a combination of these policy areas that will deliver and ultimately enable our big moves to become successful.



De-carbonising Transport

Reducing the need to travel, re-mode how we travel away from private car use and encouraging further uptake of alternative fuelled vehicles and the infrastructure they need.

WE ARE GOING TO CONTINUE TO:

- Re-mode how we travel - making it easier to walk, cycle and use public transport.
- Reducing the need to travel - making it easier to access the same opportunities and amenities without having to travel as far.
- Support the uptake of alternative fuelled vehicles and associated infrastructure through publication of our Alternative Fuelled Vehicle Strategy
- Commit to all new infrastructure being carbon neutral and carbon negative where possible
- Continue to improve local environments through the planting of street trees, contributing to our wider ambition to create new woodlands through the planting of over 5.8 million trees

WE ARE GOING TO:

- Trial new technologies to make it easier to adopt low carbon choices such as on-street electrical vehicle charging points
- Work with partners to make it easier for everyone to access services closer to home.
- Ensure low carbon mobility choices are available throughout Leeds, serving the routes and locations people need.

WE MAY NEED TO CONSIDER:

- How we can further incentivise people to use the low carbon public transport network in partnership with the Combined Authority and bus operators.
- A low carbon zone, this could be similar to the Ultra-Low Emission Zone (ULEZ) in London, where the most polluting vehicles are subject to greatest charges based on CO2 emissions.



Creating healthier streets, spaces and communities

Ensuring walking and cycling are the first choice for the shortest trips, creating places and spaces where people want to spend time which are inclusive and accessible to all.

WE ARE GOING TO CONTINUE TO:

- Provide accessible, well designed space for walking and cycling, including developing local cycling and walking infrastructure plans for all Leeds Communities.
- Use street space more efficiently by tackling congestion and reducing traffic.
- Ensure our streets are safer for everyone by working with partners to reduce crime and anti social-behaviour
- Work with accessibility and inclusivity groups on the development of a street charter to reduce barriers to travel
- Maintain the Outer Ring Road as the primary route for vehicle trips around the city in order to support the transformation of our local streets.

WE ARE GOING TO:

- Adopt Vision Zero approach to road safety, where all accidents are preventable and liability is shared between, road users, engineers and road operators
- Create and support an integrated, connected network for all modes, enabling longer trips to be undertaken sustainably building on the 20 minute neighbourhood concept
- Lobby for greater allocation of funding for these types of measures, which are currently more challenging to fund
- Monitor our Active Travel Neighbourhood trials to see if they encourage people to walk and cycle more but also reduce rat-running
- Review parking management measures across the Leeds district to include more spaces for cycles, car clubs and Electric Vehicle charging
- Tackle barriers to active travel including bike storage at home and access to training
- Develop a local shared ownership model for transport within communities through the provision of car clubs and bike sharing.

WE MAY NEED TO CONSIDER:

- Different parking management measures to reduce vehicle dominated environments and incentives the uptake of alternatively fuelled vehicles.



Transform the city centre

Continue to deliver and develop transformational change in the city centre as a place for people and seamlessly integrating all modes, supporting role of Leeds as a local, regional and national economic hub.

WE ARE GOING TO CONTINUE TO:

- Deliver transformational change through the delivery of our new gateway locations on the Headrow, Park Row and the Corn Exchange making it easier to travel for pedestrians, cyclists and public transport users
- Invest in the city centre as a national, regional and local transport hub

WE ARE GOING TO:

- Encourage and facilitate traffic to move around the city centre rather than through it with the closure of City Square.
- Create a network of open and green spaces within our streets that make the city centre more attractive supporting the Our Spaces Strategy
- Support the role of Leeds City Station, enhancing its role as a regional transport hub and enabling for the integration of high speed rail
- Maintaining the Inner Ring Road to help facilitate the transformation of the city centre whilst also ensuring we reduce the physical barrier it places between communities, making it easier for people to access the city centre.
- Review our parking strategy including park and ride facilities.
- Re-assess how we use our existing water and rail network to best service the city especially in relation to freight.

WE MAY NEED TO CONSIDER:

- A workplace parking levy, this could charge employers who provide workplace parking, with monies raised being ring-fenced to invest back into transport.



Enhance Public Transport

Building on the successes we have had in recent years in improving bus and rail services and working with partners to ensure the meet the current and future needs of users.

WE ARE GOING TO CONTINUE TO:

- Work with partners to secure the investment needed to deliver transformational improvements to the rail network
- Work in partnership with the Combined Authority and the operators to create the best bus system which is an attractive and natural choice for everyone.
- Upgrade key bus corridors (including provision of additional bus priority measures) to provide fast & reliable high frequency bus services.
- Deliver City Centre Gateways to transform the public transport experience across the city.

WE ARE GOING TO:

- Develop our park and ride offer on key radial routes across the city.
- Upgrade all key bus corridors across the city to provide a core network of high frequency bus services.
- Promote demand responsive transport services to offer flexibility and connectivity across the city in areas not well served by traditional bus services.
- Work with the Combined Authority, bus operators and technology firms to encourage service and product innovations.
- Create a well connected and seamless network of active travel and public transport infrastructure and services with integrated ticketing and payment options.

WE MAY NEED TO CONSIDER:

- How different transport operating models could improve the public transport provision in the city
- How we can provide reasonably priced fares that further incentivise people to use the public transport network in partnership with the Combined Authority.



New Mobility Solutions

Thinking about transport differently, focusing on shared mobility and how we pay for transport, encouraging flexible transport choices and using technologies to improve mobility in the city.

WE ARE GOING TO CONTINUE TO:

- Consider new technologies and innovative approaches to delivery that can open new opportunities for travel including shared mobility and micro mobility modes.
- Continue our work with taxi and private hire vehicles to provide the best service for Leeds
- Continue to support the West Yorkshire Combined Authority in the development of the Demand Responsive Transport trial.

WE ARE GOING TO:

- Deliver mobility hubs across the city where several modes can be accessed in one location integrating transport
- Ensure accessibility considered as a whole system across the council, with transport acknowledged as just a single element alongside spatial planning and technology
- Define our Shared Transport Vision to include car clubs, bikes and scooters

WE MAY NEED TO CONSIDER:

- How autonomous vehicles can play a future role in mobility within the city.
- How we can support the better integration of freight services and local deliveries to reduce van mileage in the city
- Enhanced shared ownership models and how we can integrate shared transport modes into our existing mobility services, ensuring they are affordable and offer value for money



Deliver a Mass Transit Network

Delivering a low carbon mass transit in Leeds, enhancing the transformational work already going on throughout the city through partnership with the Combined Authority.

WE ARE GOING TO CONTINUE TO:

- Through the Bus Alliance, continue to deliver the Connecting Leeds and West Yorkshire-Plus Transport Fund investment programmes, to help transform our bus offer in the short term.
- Work in partnership with the Combined Authority to develop and deliver an advanced Mass Transit system as quickly as possible.

WE ARE GOING TO:

- Ensure that the right mass transit solution is delivered that integrates instinctively with the city and unlocks the benefits for the people of Leeds at the earliest opportunity.
- Ensure that it integrates with our existing transport network, creating an affordable, zero – carbon network
- Work with partners to secure the investment needed to deliver transformational improvements to the rail network to support the Mass Transit network

WE MAY NEED TO CONSIDER:

- The further opportunities mass transit can offer for the city including the opportunities for transit oriented development



Targets

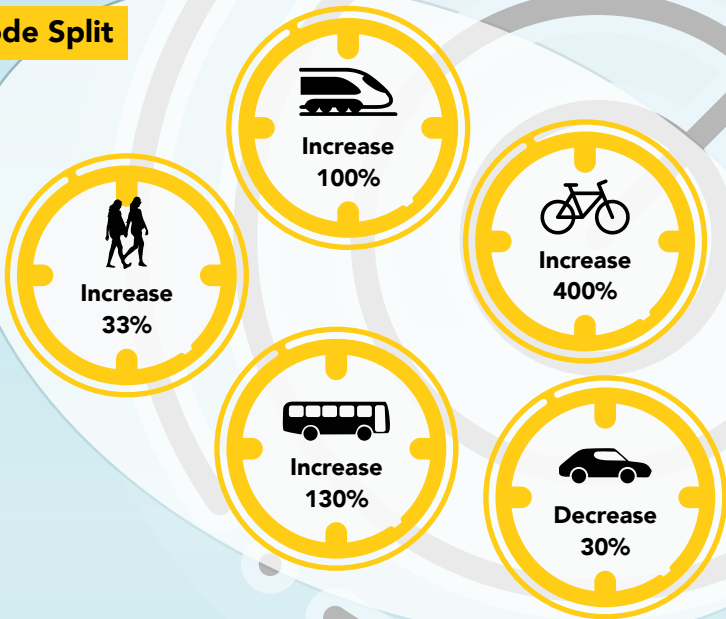
In order to achieve our strategic vision for Leeds to be a city where you don't need a car. Our overall target comprises of four components:

Climate Emergency

The Council is committed to making Leeds carbon neutral by 2030.

Mode Split

Page 26



Distance Travelled

To support our mode split targets, we need to reduce the length of car trips made in the city by 30%. That is on average 900 car miles per year.

Vision Zero

Zero people killed or serious injured on Leeds roads by 2040.

Our Big Leeds Climate Conversation, you told us that:

- 94.8%** believe that the climate is changing
- 93.4%** believe that climate change is due to human activity
- More than two-thirds** of respondents (**67.1%**) say that they already walk or cycle journeys less than a mile.
- 13.2%** would take the bus or train more often
- 33.2%** would pick up deliveries from a central location
- The exception to this is that **more than a quarter (26.5%)** of respondents say that they would consider switching to an electric or hybrid car

Our 2030 average trips components

- 31%** walking
- 41%** private car
- 2%** other
- 4%** cycling
- 22%** public transport

What you can do to help?

- Leave the car at home one day a week
- Visit places by public transport
- Have a web meeting instead of travelling to the meeting
- Walk the children to school

Meeting the Climate Emergency target

Meeting our pledge for Leeds to become carbon neutral by 2030 will be challenging. Transport accounts for 36% of all Carbon Emissions within Leeds. Our current policy projection will contribute to a reduction in CO2 emissions, however we need to do more to further reduce emissions. Our policies including our Bold and Big Moves detailed in this strategy will contribute up to a 43% reduction in CO2 emissions from transport by 2030.

The challenge in achieving net-zero carbon emissions is not one just facing Leeds, it is also facing regional and national government. The Department for Transport are currently working to a 2050 ambition for carbon neutrality and their policy projections are set out in Decarbonising Transport: Setting the challenge report. Recent announcements, bringing forward the ban on the sale of fossil fuelled vehicles to 2030 will help reduce carbon emissions however further policy actions are required.

Our Big Moves set out our focus areas for the transport strategy. To outline our proposals for each of the Big Moves, we have broken down each move into the following components:

WE ARE GOING TO CONTINUE TO:

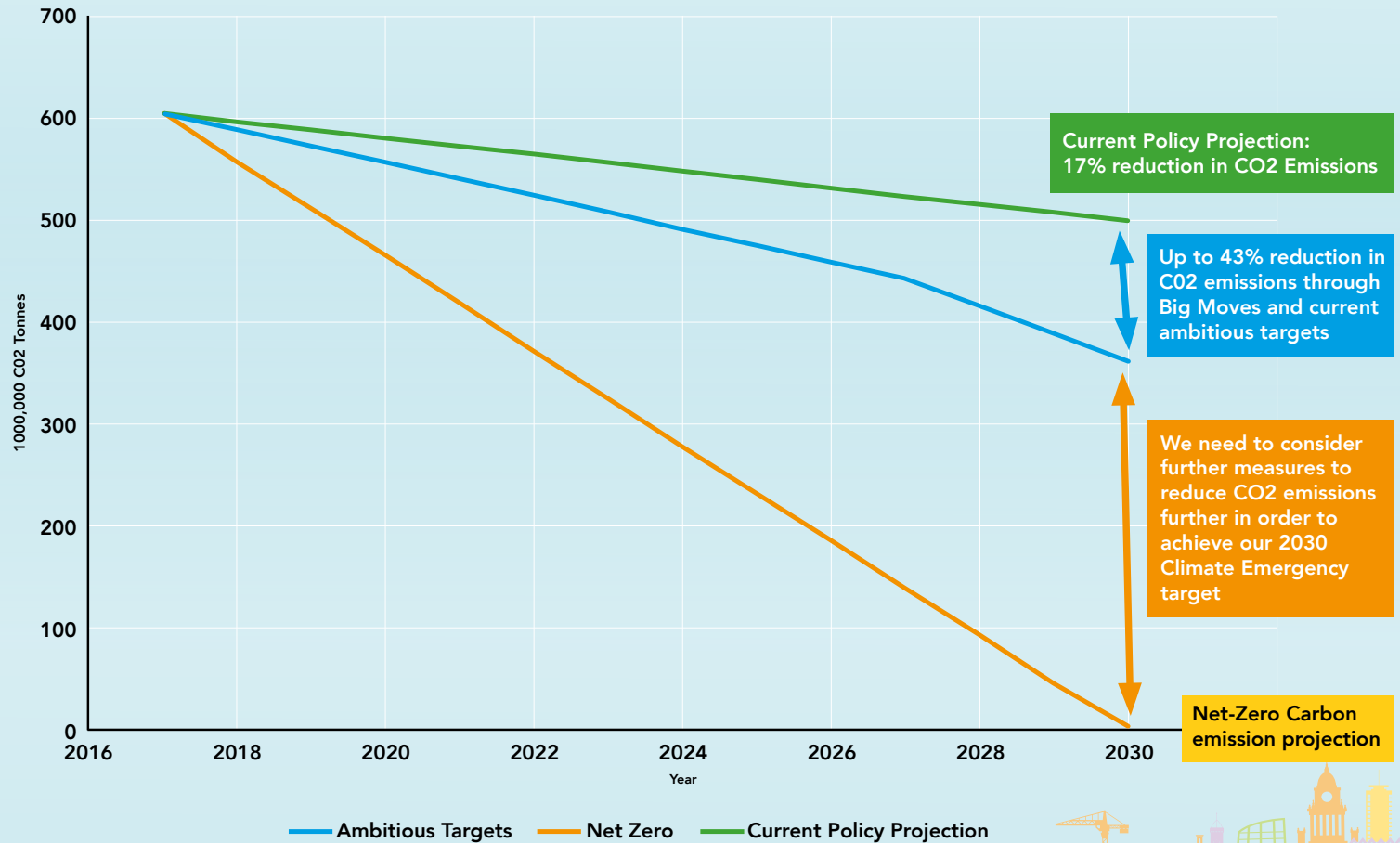
- This is where we outline what measures we are going to continue to do

WE ARE GOING TO:

- Measures we are going to introduce as part of this strategy to work towards our targets

WE MAY NEED TO CONSIDER:

- Measures we need to consider going forward in order to achieve our targets
- We will require support from Central Government to enable us to make these steps and changes to national policy to enable this to be achieved



Achieving and Delivering the vision

Achieving the vision and meeting our targets will be challenging, we need others to help. In order to deliver our strategy we will develop a series of action plans, which will detail short, medium and long term measures, transforming mobility in Leeds and supporting our objectives to be the best city in the UK. It will only be by working together that we can achieve our vision.

TO DELIVER THE VISION WE HAVE MADE A NUMBER OF IMPORTANT COMMITMENTS:

- We will guide the delivery of the transport strategy aligning it to support wider policies around creating an inclusive economy, health and wellbeing, well designed spaces and decarbonisation. We will lead by example. *#LeedsbyExample*
- As we deliver our Strategy we will continue to review the outcomes and where necessary make adjustments to ensure they remain relevant to achieving our goals.
- We will work collaboratively and adopt an open and committed approach to working with our partners.
- We will continue to explore a range of funding opportunities as they arise.
- We will engage with the citizens and businesses of Leeds to ensure the transport strategy meets their needs.

Page 28

TO DELIVER OUR AMBITIOUS STRATEGY, ACHIEVE OUR VISION AND MEET OUR OBJECTIVES, IT WILL TAKE A WHOLE CITY APPROACH WITH GENUINE ENGAGEMENT AND SUPPORT FROM CITIZENS, BUSINESSES AND PARTNERS.

- We ask the **citizens, visitors and businesses** to continue to engage with LCC to help inform the strategy, deliver our vision and work together to achieve these targets.
- We ask that the **Transport Expert Panel** we have established continue to support the development and delivery of mobility solutions in Leeds.
- We work in partnership with the **West Yorkshire Combined Authority** on a daily basis and will continue to do in the development and delivery of policies and priorities.

We believe that through this continued partnership approach better integration and outcomes can be delivered.

- We ask **The Government** to commit to a comprehensive long term funding package to give us certainty on our future transport investments and for co-ordination of different governmental policies.
- We ask that the government commits to the delivery of the eastern leg of **High Speed 2** to Leeds and that **Transport for the North** continues to work with us to enable the delivery of Northern Powerhouse Rail and other policies such as integrated ticketing.
- We ask **Network Rail** to work with us and the **Combined Authority** to bring forward the delivery of three new stations in Leeds as well as further improvements.
- We ask that **Highways England** works with us to reduce negative impacts of the Strategic Road Network on our the severance of our communities air quality or carbon emissions.
- We ask all **train operating companies and the DfT** to continue to invest in new greener rolling stock to increase capacity into Leeds Station and reduce overcrowding.
- We ask the **bus operators** to continue to work with us enhance bus services and vehicles across the city.
- We ask all developers support our vision for Leeds and help contribute to it and to continue to engage with us to support well connected development.

As part of our engagement strategy we are now seeking feedback on this draft strategy. Your feedback will be carefully analysed and will inform the final strategy for Leeds.

Next Steps

Public Consultation

December – February

Review of all consultation responses

February – April

Publication of new Transport Strategy

Early Summer 2021



Report of: Head of Stronger Communities

Report to: Inner East Community Committee- Burmantofts & Richmond Hill, Gipton & Harehills and Killingbeck & Seacroft

Report author: Ruth Tiernan, Localities Officer, Tel 0113 5351085

Date: 17th March 2021 **For consideration**

Inner East Community Committee - Update Report

Purpose of report

1. To bring to members' attention an update of the work which the Communities Team is engaged in, based on priorities identified by the Community Committee. It also provides opportunities for further questioning, or to request a more detailed report on a particular issue.
2. This report provides regular updates on some of the key activities between Community Committee meetings and functions delegated to Community Committees, Community Champions roles, community engagement, partnership and locality working.

Main issues

Updates by theme:

Health, Wellbeing & Adult Social Care: Councillor David Jenkins and Councillor Asghar Khan

Active Leeds

The Keeping Well at Home Programme

3. Active Leeds and Public Health have created the "Keeping Well at Home" resources to support people that are shielding, clinically vulnerable or have

mobility problems to keep moving during to the lockdown. These resources have recently been extended to provide further support for people wanting to stay mobile and active at home. The new programme includes:

- Online Exercise Activities via Zoom
 - IPAD Loan Scheme
 - Personalised Support
 - Digital activities on YouTube
 - Activity DVDs
 - Peer Support Groups
 - Printed Resources such as the Keeping Well at Home Booklets
4. For more detailed information about the Keeping Well at Home programme visit: active.leeds.gov.uk/keepingwellathome

Health Referral Programme

5. Active Leeds is accepting referrals and self-referrals to its referral programme throughout lockdown. The programme focuses on adults and supports people that are demotivated or just don't know where to start to become active. Each person has their own Health and Wellbeing Coach who will support people in accessing a range of resources to keep them active during lockdown. You can access the programme by completing the following online enquiry form: <https://surveys.leeds.gov.uk/s/SLNH3/>

Get Set Leeds Local

6. Get Set Leeds Local is a physical activity project targeting Beeston Hill, Holbeck, New Wortley and Seacroft and uses an asset based approach to develop the capacity of the local physical activity system.
7. Having secured significant external funding from Sport England, the project team which comprises of representatives from inside the Council including Active Leeds and Public Health plus voluntary community sector delegates have set about building the ground work for the three year project.
8. In the first 12 months of the project Active Leeds have achieved the following outcomes that were set out in our project delivery model agreed by the funder Sport England:
- Established a project team and recruited a support officer
 - Developed a Community Chest pot of Funding for projects - resident led
 - Engaged with residents and started to develop coproduction networks

- Created an e-Book of training courses that can be upskill residents
 - Supported ideas and projects directly from residents that get people active
 - Share learning across localities to look at scaling opportunities
9. In December the Get Set Leeds Local sub team held a series of digital community conversation events which have allowed them to accelerate the development of co-production networks within the target localities and a range of ideas and concepts were brought forward by the community.
10. In the last 6 months a number of key co-produced projects have started to develop, targeting a range of sub groups in the community these include the following:
- Walking, cycling and jogging development across all target areas with partners including LS14 Trust in Seacroft
 - Community running project which targets residents that are recovering from addiction
 - Play sufficiency project which looks to develop children's play across the localities
 - Table Tennis supporting residents to engage in table tennis at home using a community box approach and digital sessions
 - The High Rise arts and social change project looking at green spaces and physical activity and building a conversation with residents
 - Seacroft Community on Top have developed a community gym at Dennis Healey Centre

Inner East Public Health

Additional Covid-19 Testing by Leeds City Council

11. Leeds City Council was providing additional testing in parts of LS8 in line with the recent government announcement on Covid-19 variants. This additional testing was to help improve understanding on how variants spread.
12. The testing complemented ongoing business engagement activity already going on in this area and was only for people without Covid-19 symptoms to help Public Health and partners to be better informed and plan local responses.
13. The additional testing was available for those living or working in parts of LS8, including parts of Harehills and the area just north of Easterly Road (and some small areas outside of LS8).

14. Levels of infection have been falling in this area of Leeds over recent weeks, in line with improving infection rates right across the city, and there are no additional risks for anyone living or working in the area. The best advice still remains to keep safe by thinking hands, face and space and staying at home when you can.

COVID-19 vaccine

Pfizer BioNTech and Oxford AstraZeneca vaccines

15. The NHS is now offering vaccinations to people who are most at risk from Covid-19. The two approved vaccines Pfizer BioNTech and Oxford AstraZeneca are safe and have been through rigorous checks, as well as extensive trials. Both vaccines do not contain any animal product or egg.

16. The vaccines are free of charge and only available through the NHS. Anyone who claims to be able to provide you with a vaccine for a fee is likely to be committing a crime and should be reported to the Police online or by calling 101. The NHS will never ask you to press a button on your keypad or send a text asking you to confirm you want the vaccine.

Priority groups to receive the first vaccine

17. The NHS is planning to vaccinate everyone in the top four priority groups identified by the Joint Committee of Vaccination and Immunisation, including older care home residents and staff, everyone over 70, all frontline NHS and care staff and all those who are clinically extremely vulnerable.

18. You will only be able to book an appointment when you receive an invitation from your GP practice, please do not contact your GP practice or any other NHS services as you'll need to wait for your invite. When you receive your invite, please act immediately and attend your booked appointments

Key facts on vaccines

19. Below are some of the key facts on Covid-19 vaccines:

- All vaccines are tested and regulated to make sure they meet safety standards
- After clean water, vaccination is the most effective public health intervention in the world for saving lives and promoting good health

- Immunisation currently prevents 2-3 million deaths every year from diseases like diphtheria, tetanus, pertussis, influenza and measles
- Vaccines protect other people in your community by helping to stop diseases spreading to people who cannot have vaccines
- It's safe to give children several vaccines at a time and this reduces the amount of injections they need
- Vaccines teach your immune system how to create antibodies that protect you from disease

Covid-19 Toolkit – Resources and Key messages

20. Leeds City Council has produced a new toolkit to help partners share important key messages about coronavirus in Leeds. The toolkit is hosted on Google Drive and so can be freely accessed by external (as well as internal) partners.

21. It includes a range of posters, graphics, social media posts and other resources created by the council and partners that can be downloaded and shared to help promote the most relevant key messages around prevention, testing, and the range of support available to residents in Leeds.

22. It also includes a selection of Government-produced resources that can be shared to raise awareness of the current national restrictions. A number of resources available in multiple languages. This toolkit will be continued to be added to as more resources become available.

23. A presentation includes an overview of the toolkit contents as well as instructions on how it can be used. The toolkit is updated regularly with new or updated resource. Please email chad.newton@leeds.gov.uk if you would like to be notified of new resources as they are made available in the toolkit.

Local Care partnerships

24. HATCH is a well-established and vibrant partnership which covers the areas of Chapeltown and Burmantofts, Harehills and Richmond Hill. The LCP works with a diverse range of partners including general practice, community health services, Public Health, Adult Social Care, elected members and a broad range of Third Sector and community groups.

25. The LCP focus on building relationships to deliver improved services with approaches around conversations, connections and assets and strengths. The

current priorities are ageing well, supporting families who are shielding and children and families.

26. The LCP has been working with the Burmantofts, Harehills and Richmond Hill Primary Care Network to support the vaccine rollout and to ensure everyone is vaccinated when called upon.

Public Health Covid-19 grants

27. The Public Health Covid-19 grants have built on and connect to the work that Forum Central started with the Communities of Interest Network. Voluntary Action Leeds offers specialised support around volunteering to the grants. They have offered help, advice and information on how to strengthen volunteering engagement to strengthen the funded groups through building capacity and resilience.
28. The Covid-19 grants are an important part of the Leeds Covid-19 outbreak plan's approach to prevention. Their aim is to ensure that Covid-19 messages and support are targeted at those with increased risk and mortality from Covid-19 infection and where case rates are increasing faster than other groups.
29. The distribution of the Covid-19 grants have been led by Forum Central (in a consortium that includes Voluntary Action Leeds, Health watch, and Leeds Community Foundation) since summer 2020.
30. This is the first time that all the third sector partnership organisations in Leeds have worked together in this way, which has enabled engagement with the broadest set of relationships across the third sector, as well as faith organisations and community groups. This has given real reach into communities, joining up approaches across the sector. Community Champions have been empowered to deliver and develop evidence based messages and keep people connected during the pandemic. They have been able to quickly adapt to trends and communicate key messages through innovative and effective approaches.
31. Space 2 alongside Shantona Women and Family Centre, Zest, People in Action, The Old Fire Station and Healthwatch Leeds have been successful in applying for the Public Health Covid-19 prevention grant. Focusing on Gipton and Harehills the organisations will be developing a range of activities including pop up events and designing a film 'talking heads' to record local people's feelings about what they have learnt living through the pandemic and how they see the next 5 years.

Winter Wellbeing Grants

32. Grants were distributed to various 3rd Sector Organisations to support a range of vulnerable people to keep warm well as well as tackling social isolation during the winter months. The agencies awarded grants covering the Inner East were as follows:

Zest

33. Zest's health and wellbeing project will support participants to get involved with a range of activities to help improve their overall wellbeing such as arts and crafts, games, gardening and general socialising. Participants will learn exercises to keep warm in their home and improve strength, balance and co-ordination, given the skills, knowledge and weekly ingredients to confidently make nutritious soups and stews for themselves and their family. During the sessions participants will receive help on using their technology, for example those with smartphones or tablets will be provided the skills and confidence needed to stay connected via video calls/social media, complete online shopping tasks, order prescriptions along with staying safe online.

The Old Fire station

34. The Craft Club will reach lonely and isolated local people who would like to make friends, learn a new skill - particularly after the pressures of the last few months' isolation. The original group who formed last year say that coming to Craft Club has helped them leave the house, make friends and have something constructive to do. One of the original group is agoraphobic and coming to the club weekly has helped her - she says she feels safe at The Old Fire Station and knows she has friends there. In order to support those that are still feeling anxious about being out, the craft club leaders will create packs which will be distributed via local networks to reach those who might prefer not to attend in person. It is hoped that receiving these packs will help people feel less isolated and may encourage them to build up the confidence to attend.

Richmond Hill Elderly Action

35. RHEA's befriending project is for volunteers and staff to regularly visit and befriend older vulnerable people on a regular basis over the winter months to ensure they are safe, secure warm and all wellbeing needs are being met. If there is a second wave staff and volunteers will keep up contact via telephone calls and where possible videos calls and socially distanced house calls.

DIAL

36. DIAL received funding to support disabled people who are clinically extremely vulnerable and either live alone or with household members who are also vulnerable including older people, children, carers and those with long-term conditions. The support will be personalised, intensive and flexible so that it can meet the unique needs of each individual as they identify them based on their own priorities. This support will primarily be given over the phone, by text and social media direct messaging (or by email, through Zoom meetings or other personal preferences for contact).
37. It will also include the provision of safely delivered face to face contact through doorstep/garden visits and outdoor meet ups in community locations such as the local park as and when necessary for ensuring a person's wellbeing. During each contact we will monitor health/wellbeing and act on any concerns with appropriate support and interventions including urgent or emergency assistance to ensure people have sufficient food, medications, heating and other essentials over the winter.

Hamara

38. The befriending project received funding for volunteers and staff to regularly visit and befriend older vulnerable people on a regular basis over the winter months to ensure they are safe, secure warm and all wellbeing needs are being met. If there is a second wave staff and volunteers will keep up contact via telephone calls and where possible videos calls and socially distanced house calls. Befriending service and activities (e.g. exercise classes) via Zoom, food delivery and winter warmer packs the project support included people from the Inner East of Leeds.

Environment and Community Safety: Councillor Denise Ragan

Environment and Community Safety Sub Group

39. The Inner East Environment and Community Safety sub-group met on February 25th via Skype and was chaired by Cllr Ragan with members and council officers in attendance. Updates were given on local issues around waste, housing, parks and countryside and LASBT.

Selective Licencing

40. Selective Licensing officers continue to process licence applications received for privately rented properties in the Burmantofts and Richmond Hill and Gipton and

Harehills wards. Draft licences started to be issued in January together with a number of final licences in February.

41. The Covid-19 pandemic has restricted the activity the service has been able to undertake in the last 12 months. Unfortunately the team have not been able to go out and undertake proactive visits as planned, crossing the threshold and ensuring standards of people's homes meet the minimum standards and address those in need. Hopefully with the roadmap announced by the Government this will be possible from the summer onwards.
42. Despite the challenges posed by Covid-19, over the last 12 months the service has continued to address housing conditions in line with the Government's own guidance. As a result the following has been achieved in relation to selective licensing:
 - So far 3380 licence applications have been received for properties in Harehills. 95% of initial licence fees have been received in relation to these applications. Action is being taken to chase all outstanding payments
 - Recruitment has now taken place and 10 posts in the Harehills Selective Licensing team have now been filled as of October 2020 and they have been assessing applications and issuing draft/full licences. Given the restricted access to the office this has been more limited than planned due to a smaller number of officers being able to attend and process applications in a safe manner given the safety protocols in place
 - 29 properties are currently being investigated for operating without a licence – 20 of these are subject to the service of/will be subject to the service of civil penalties for breaches of the legislation. These will be subject to potential appeals by landlords
 - In the last 12 months 61 properties have still be visited in the area resulting in the service of 57 legal notices
 - 161 properties have also been improved in the last 12 months with most of this being a result of pre Covid activity.

LASBT

43. LASBT continues to work tirelessly to combat and reduce anti-social behaviour across the Inner East of Leeds, despite still operating under Covid restrictions which effectively means staff having to case manage work from home, with only strictly risk assessed visits being allowed in exceptional circumstances. That makes it very challenging for the service to deal with perpetrators by post or phone.

44. Workloads have stabilised at 246 active cases across East, following the relentless week on week increase of last year. 122 of those cases are in the Inner East.

Burmantofts & Richmond Hill

45. Have 36 active cases spread evenly across all the neighbourhoods in the ward. There are no specific trends or themes although the most resource intensive and complex cases in the area all involve residents with mental health issues that have an impact on neighbours and the wider community.

Killingbeck & Seacroft

46. Have 53 active cases with again an even spread across the neighbourhoods in the ward. Specific work is being looked at to tackle hate related issues in South Seacroft, Imogen Wilson from Communities looking at a package to be used in schools to educate. Cases have reduced and several youths dealt with and banned from these streets. One case remains on the Hate Crime MARAC. A lack of evidence as always remains problematic. Local hotspot areas are Tesco's and Boggart Hill Drive with youth nuisance again emerging as a problem. The issues at the Britannia Hotel are on the radar as well although the majority of the issues are the other side of the A6120.

Gipton & Harehills

47. Have 33 active cases again spread evenly between the two neighbourhoods. In Gipton, neighbour issues centred around noise are the main issue, much of it exacerbated by the lockdown situation. In Harehills, neighbours and noise are again a factor along with street drinking and youth nuisance. Work is ongoing to look at further injunctions to tackle the worst offenders amongst the street drinkers. LASBT have successfully obtained 4 thus far, whilst the PSPO will continue to be enforced widely across the area with particulate attention to key locations. Work with Leeds Teaching Hospital Trust continues on enforcement work to protect patients, staff and visitors from the anti-social behaviour from a cohort of disruptive street users who frequent the estate on a regular basis.

Neighbourhood Policing Update

Ascot Terrace and surrounding streets

48. Multi-agency approach adopted given this area has been a persistent location for youth anti-social behaviour over several years. Several days of action

conducted in conjunction with LASBT. Residents were spoken to and leaflet drops encouraging members of the public to contact relevant agencies were carried out so that the problems could be fully understood. Visible policing patrols have been focused on the area at relevant times. Key suspected offenders were identified, visited and referred to support agencies. Early indications are that reported ASB fell by 67% in the month of January and the approach will be continued.

Covid-19

49. As with all agencies the pandemic has continued to pose challenges relating to working practices and at times staff absences. In addition, early analysis indicates officers provided formal warnings or issued penalty notices at 145 separate incidents across the three ward areas between 14th January 2021 (the date of the last Committee report) and 22nd February 2021. The overwhelming majority of these incidents related to individuals gathering together illegally and the majority of those were within residential premises.

Street Drinking

50. The multi-agency approach to reducing the public consumption of alcohol in and around the junction of Harehills Lane and Compton Road appears to have successfully reduced this issue as demonstrated by incidents reported directly to the police, observations by local officers and more anecdotal reports from the public. There are some indications of limited displacement which is being addressed. There is also a clear plan in place should reports increase when coronavirus restrictions ease.

Britannia Hotel

51. This location on the ring road at Whinmoor is actually within Outer East Leeds but has caused significant concern amongst residents in the Seacroft ward, particularly following a serious assault in a nearby underpass leading between the ward areas. There is a local hostility towards the hotel which is being used to house homeless individuals, partly due to misconceptions that it primarily houses “asylum seekers” or prison leavers. Residents have also reported an increase in begging, littering and theft offences across both ward areas and around the nearby Seacroft Shopping Centre. Neighbourhood Policing have temporarily deployed a permanent policing presence between the ward areas, have assisted in arranging weekly and bi-weekly meetings between partners regarding the hotel, and assisted LCC with communications and site security amongst other issues.

Woodland Creation Update

52. Leeds City Council has made a commitment to address the immediate climate emergency and have an ambitious target for the city to be carbon neutral by 2030.

This is for the benefit of the health of our communities as well as the future of the city and our planet.

Parks and Countryside have a woodland creation program, planting 50 hectares of land each year for the next 25 years, planting 5.8 million trees over this time. The woodlands are for public use, to increase the biodiversity for wildlife, insects and birds as well as to capture carbon and reduce air pollution.

53. Design and planting of the woodlands is carefully considered, with only native species, species specific and suitable for each site, planted in block planting and planting is to Forestry Commission standards. There has been consideration of future public use ensuring openings to access for walking and enjoyment.

54. Decisions about tree planting along the green corridors, and the city as a whole, have been sympathetic to the need to strike a balance between the urgency of the climate emergency and the importance of the physical and mental health benefits of recreation and exercise.

55. We are trialling an online engagement method in Gipton and Harehills for residents to suggest areas for tree planting [here](#). If this is a successful tool we will roll this out across the city. You can find more information on the Arium website <https://www.theariumleeds.co.uk/woodland-creation>.

Planting in Inner East in 2020/2021

56. We have planted 35,452 whip trees in the ward over 6 sites in the Inner east. One site was altered to include planting standard trees instead of whips due to the proximity to housing. This has resulted in planting 9 standard trees, 1 oak 4 birch and 4 cherry trees. This will enhance the site and improve biodiversity and increase canopy cover.

The following are the named sites:

Site name	Ward	Area in ha	Total amount of whips
East End Park	Burmantofts & Richmond Hill	2.0124	8,943
Rookwood Crescent	Burmantofts & Richmond Hill	0.2195	9stds
Foundry Lane POS	Gipton & Harehills	0.7065	3,140
Barncroft Drive	Killingbeck & Seacroft	0.8123	3,610
Foundry Lane POS	Killingbeck & Seacroft	1.0418	4,630
Inglewood Gardens/York Road/South Parkway	Killingbeck & Seacroft	1.4935	6,750

Ramshead Drive (nr Ramshead Approach)	Killingbeck & Seacroft	0.7249	3,221
Wetherby Road/Monkswood Rise	Killingbeck & Seacroft	1.1606	5,158

Housing Update

57. Funding awarded by the Inner East Community Committee has been used on two recent environmental projects. Tree planting has taken place at the Denbighs flats along with communal door planters and a second project at Lincoln Green has seen planters planted up with Spring bedding. Further to these projects tree orchard sites are planned for at the Denbighs, Braisdale Court and at the Shakespeare flats where the car park has been returned to grass.

58. In Seacroft a new “Green Guardians” scheme has been established which is a vulnerable garden scheme to assist tenants with vulnerabilities by getting gardens to an easy manageable level. It also gives the opportunity for the community to volunteer and help with gardens, restrictions permitting.

Children and Young People: Councillor Salma Arif

Youth Service

59. Youth Service are working directly with young people at risk of being drawn into crime and violence. They have been working closely with the neighbourhood policing teams across the Inner East throughout the Covid-19 pandemic, responding to intelligence reports on where the police have seen young people not adhering to social distancing &/or engaging in anti-social behaviour.

60. Youth Services are continuing to deliver delivering sessions on a range of issues facing young people including anti-social behaviour, substance misuse, weapons awareness, gang culture and hate crime and diversity.

CATCH

61. CATCH and Leeds City Council are working in partnership to deliver specific engagement and interventions to young people who may be at risk of engaging in crime, anti-social behaviour and youth violence.

62. CATCH recruited a part-time temporary staff member to take on the role as Youth Engagement Leader until March 2021. The overall aim was to divert young people away from offending/re-offending, negative peer groups/behaviour and provide positive activities for them to engage in. The Youth Engagement Leader has been hugely successful, working with over 100 young people living in Harehills over the course of just 6 months. This included work with young people who engaged in the 2019 Bonfire Night disorder. The funding for the post is now coming to an end and further funding is being sought to extend the post.
63. Funding has been secured for a new “CATCH on Wheels” project to run in the Burmantofts and Richmond Hill ward with the aim of supporting young people from a host of backgrounds, providing them with safety, stability and purpose.
64. CATCH have secured funding to work with up to 10 - 15 young people from the Nowells area. These will specifically, be recruited for the purposes of up-skilling them to become volunteers. The intention is to carry out one to ones with the young people and group work. The focus is to build their skills, confidence and knowledge about volunteering following the CATCH “Youth Community Builders” programme.
65. The LCC Communities Team will work with them to plan the use of the new Nowells space, plan the activities that will be running within the centre and how best to engage the local young people in these activities. By allowing young people from the Nowells to be part of the initial planning will create ownership and pride in the space.

Youth Engagement Project

66. The Youth Engagement Project is run by a consortium of local organisations; Leeds Street Team, Give a Gift and Leeds Muslim Youth Forum and is another local project to highlight. Funded by Youth Endowment Fund, the project aims to engage young people, with a specific focus on 10 to 14 years, from socially excluded backgrounds who are at risk of being drawn into anti-social behaviour, crime and violence. The geographical focus is primarily Harehills. The project has been supported by the Senior Localities Officer from inception.
67. Through detached youth work and workshops, the project educates and empowers young people to improve their understanding of personal responsibility and equip them to make more independent, and informed positive life-choices.

Employment, Skills & Welfare: Councillor Ron Grahame

Universal Credit

68. The table below shows the revised figures for the number of people claiming Universal Credit in the Inner East Community Committee area that were unemployed in November 2020 is 9,710. This is an increase of 72% since March 2020 and an increase of 234 on the previous month.

	Universal Credit Claimants (Not in Employment) 16-64yrs					
	March 2020		October 2020		November 2020	
	Number*	Rate**	Number*	Rate**	Number*	Rate**
Inner East	5,658	10.5%	9,476	17.6%	9,710	18.0%
Burmantofts & Richmond Hill	2,068	11.5%	3,243	17.6%	3,319	18.0%
Gipton & Harehills	2,210	11.2%	4,086	20.2%	4,228	20.9%
Killingbeck & Seacroft	1,380	9.2%	2,147	14.1%	2,163	14.2%

**Number is the number of people claiming Universal Credit that are not in employment*

***Rate shows the number of claimants not in employment as a percentage of the working age population*

Employment and Skills Services

69. The table below shows the number of people being supported from the Inner East Community Committee area:

	Accessing Services		Into Work		Improved Skills	
	2020 (Apr – Dec)	2019 (Apr – Dec)	2020 (Apr – Dec)	2019 (Apr – Dec)	2020 (Apr – Dec)	2019 (Apr – Dec)
Inner East	1,786	3,246	497	1,105	981	1,646
Burmantofts & Richmond Hill	597	1,132	169	438	325	606
Gipton & Harehills	848	1,478	234	472	476	712
Killingbeck & Seacroft	341	636	94	195	180	328

70. Due to the ongoing impact of COVID and the temporary closure of face to face services since March 2020, the employment and skills delivery models have been adapted and are continuing through a virtual or remote offer along with email and telephone support. During April to December 2020 8,755 people have accessed the Service, 1,786 of whom were from Inner East, a reduction of 45% when compared to the same period last year.

71. Across the city the service has supported 2,701 people into work, this reporting year (April 2020– December 2020). 497 residents from the Inner East have been supported into work, a reduction of 55% when compared to the same period last year. They were supported into work across all sectors with the largest numbers in health and care, food retail, logistics, distribution and transport. Over 258 new businesses were supported to recruit new staff and to provide support for staff facing redundancy. Recruitment continues in the health and care sector as it deals with winter pressures, and in digital roles across all sectors.

Leeds Employment Hub

72. Leeds Employment Hub is a single point of contact for European Structural Investment funded programmes and Jobshops that provides tailored and comprehensive support into employment or education to all unemployed Leeds residents. A team of Employment Advisors deliver the programme by providing one to one support for eligible residents. The Service has been successful in securing an additional £4m ESIF funding to support around 4,000 people in Leeds to improve their skills and significantly increase their prospects of moving into sustained employment. The funding is agreed from January 2021 to December 2023. This project will offer tailored preventative and remedial support to residents who are disadvantaged in the labour market. Delivery will be through the Community Hubs with Employment and Skills managing the contract with DWP.

Vaccine Programme

73. The Service has been facilitating the recruitment of the Vaccinating Leeds programme on behalf of Leeds Teaching Hospital Trust, including the recruitment of Admin, Health Care Assistants and Front of House positions. The first in-take of interviews have been scheduled with roles currently ring-fenced for candidates from the Employment Hub. Interviews have been arranged for over 100 applicants, 72 of whom have passed the interview stage and are awaiting either references and or DBS/right to work checks before undergoing training with NHS.

Adult Learning

74. Between April and December 2020 the service has supported 4,703 people across the city to improve their skills. From the Inner East, 981 residents have completed a skills, a reduction of 40% when compared to the same period last year. Delivery of the 2020/21 programme commenced in September 2020 with 16 commissioned providers delivering online courses with an increased focus on digital skills and work focused courses. Since the start of the new academic

year, September 2020, 490 courses have been advertised on the Leeds Adult Learning website.

75. New methods of Adult Learning delivery were supported to include blended learning. This has involved digital delivery through mobile phones, coupled with home learning options, remote delivery, including outdoor learning and the return to face to face learning when restrictions were lifted and delivery spaces will be reworked to ensure they are COVID secure. In addition home learning resource packs have been developed to enable a flexible approach, increasing pastoral support with a particular focus on vulnerable learners and learners who are unable to access online learning.

Leeds Apprenticeship Festival

76. Leeds Apprenticeship Festival will take place during National Apprenticeship Week, 8th - 12th February 2021 and will be held virtually for the first time. A dedicated webpage, created by an external organisation ODI, will host the festival. Visitors will be able to watch exhibitor Apprenticeship presentations and videos, contact employers directly, book meet and greet Q&A sessions with exhibitors and receive IAG support. 77 exhibitors have confirmed their attendance. A promotional campaign to advertise and raise awareness of the event commenced 4th January 2021.

Levy Match

77. The Levy Match Leeds was launched on 5th October 2020 to boost Apprenticeship numbers. Supported by a web based platform, the service enables large levy payers to transfer up to 25% of uncommitted funds to small and medium enterprises wishing to support an Apprenticeship. The online brokerage service aims to make this as simple as possible to ensure maximum levy investment is retained and invested locally to create more Apprenticeship opportunities. To date 19 SMEs and 5 Levy Payers have accessed the website and over £100,000 has been committed so far to support Apprenticeships.

Kickstart Scheme

78. The Kickstart Scheme, part of the Government's Plan for Jobs 2020, launched in September. The Employment and Skills service is now a registered Kickstart Gateway supporting businesses to offer 6 month paid placements for young people aged 16-24 currently on UC and at risk of long-term unemployment. Since the Kickstart Gateway started at the beginning of October 2020, 247 placement opportunities have been submitted to DWP, offered by 62 employers.

Subscription Service

79. A new subscription service “The List” was launched in November 2020 through the Leeds City Council Website. Subscribers to The List receive the service’s weekly job vacancies, Apprenticeships and course information. Since December 2020 those registered to receive our emails have increased by 114% to 4,685 and 17,000 emails were delivered. For further information please visit: <https://public.govdelivery.com/accounts/UKLEEDS/subscriber/>

Developing You

80. “Developing You” is a partnership approach to providing a locally driven pre-employment support programme incorporating wellbeing and employability modules and targets unemployed priority neighbourhood residents with mild to moderate mental health challenges. Due to COVID phase 1 of the pilot programme was moved online during autumn/winter 2020 and 49 local residents were engaged from the Local Care Partnership areas of Armley, Harehills and York Road. One further remotely delivered course is being offered spring 21 before phase 2 explores face-to-face delivery once restrictions allow.

Community Engagement: Social Media and Newsletter

81. **Appendix 1**, provides information on posts and details recent social media activity for Inner East Community Committee Facebook page.

The Communities Team

Priority Neighbourhoods

Boggart Hill

Chapel FM Arts Centre

82. The Chapel FM Arts Centre / East Leeds FM Radio has been keeping dozens of young people from East Leeds and the wider community connected using radio and digital activities during lockdown. The weekly Next Generation Youth Arts & Broadcasting courses have continued to meet on a regular basis all through lockdown and every other Friday produce a live radio show and podcast called Red Kite featuring stories of how people from across communities are staying engaged and creative in many ways. All 30+ episodes of the Red Kite show can be heard here: <https://www.chapelfm.co.uk/elfm-player/shows/list/red-kite-youth-radio>

83. In addition, Chapel FM has been an active part of the Seacroft & Killingbeck Care Hub, working with LS14 Trust and other third sector partners to coordinate food and other wellbeing deliveries. They have started up a digital access project to refit donated computers and other digital devices to give out to the community, used the new kitchen to prepare meals for older residents in coordination with Seacroft Friends and Neighbours and are producing a weekly radio broadcast called Stay Close featuring stories of people working to keep our communities connected during the pandemic www.chapelfm.co.uk/elfm-player/shows/list/stay-close-seacroft-weekly-covid-19-pandemic-broadcasts Chapel FM are also preparing to reopen their recently expanded and renovated venue when lockdown regulations permit and hope to organise some outdoor activities for young people and adults later in the spring and summer.

Kentmere Community Centre

84. The latest lockdown has meant the centre has had to review and make changes to who could do what at the centre. They currently have no weekly groups meeting there at present but all tenants are still working and supporting the community and the food parcels have moved back up to the centre and the food parcels are being prepared by LS14 Trust from the kitchen. During the last couple of months they have coped with the difficult snow conditions and kept the centre safe and open to enable everyone to keep on delivering and working from there.

85. The hall was used again to prepare activity boxes for the February half term as it had been for Christmas with volunteers working with staff from LS14 Trust and Fall into Place to ensure over 160 boxes went out to families in the ward.

86. Rachel Dodson at the centre has been meeting and discussing food pantries with Health for All and has had a very positive meeting with LS14 Trust about this with a further update planned hopefully for the next committee meeting. On a practical note, the pool table is finally working again and the cinema room has been totally transformed ready for groups returning to the centre.

Cliftons and Nowells

Nowell Mount Park

87. Over the past 2 years incremental improvements have been made to Nowell Mount Park. This highly valued local green space was essentially a playing field with a multi-use games area. Engagement work with the local community identified a desire to make the space more interesting and appealing to

residents in the area. Funding was secured for new play equipment which was installed last year, a further 16 trees and 100 saplings have just been planted on the site in February.

88. There are other ideas and opportunities for the site including the renovation of the MUGA and possibly some cycling infrastructure, seating areas and more diverse planting. Parks and Countryside are now at the stage where they recognise the site requires a “master plan”. Essentially a plan of the site which can be drawn up in conjunction with local residents to map out where future improvements could go as and when funding opportunities become available. Active Leeds are currently pursuing funding opportunities from The Football Foundation and British Cycling for further investment on the site.

Detached Youth Work

89. The Youth Association have been working on a programme of detached youth work in the Cliftons and Nowells which engages young people in recreational and developmental activity at street level. Youth workers engage young people (on street corners, parks and other congregation spots), to deliver interactive street-based workshops, promoting positive attitudes and boosting knowledge on the most prevalent issues, such as positive masculinity and knife-crime awareness.

Target Wards

Burmantofts and Richmond Hill

Digital Inclusion

90. A working group has been established to bring partners together to better coordinate work within the ward on the digital inclusion agenda. At the latest Burmantofts and Richmond Hill Neighbourhood Improvement Partnership the issue of digital exclusion loomed large as a common barrier to residents accessing various services. 100% Digital Leeds and Communities Team staff identified key partners to meet and discuss this subject.

91. The group met for the first time in February and have begun to develop an action plan around the key themes below:

92. Greater awareness and engagement in the community:

- Improving organisations’ awareness of the barriers to and benefits of getting online via receiving Digital Champions training and knowing how to better

understand and help digitally excluded people, particularly those with accessibility barriers e.g. language, disability, literacy

- More organisations signed up to the 100% Digital Leeds mailing list where opportunities to strengthen infrastructure via training and are regularly promoted
- Sharing knowledge about community initiatives which could help to increase digital inclusion among residents

93. Greater community capacity by bringing in resource to the area:

- More community organisations and stakeholders able to offer free internet access and/or computer/device use in the area to help digitally excluded people, whether through community spaces or loan schemes

94. More local representation at an individual level and greater accessibility:

- More representation of local people with lived experience of digital exclusion when designing solutions that work for those in the community, in a similar fashion to the approaches of Healthwatch Leeds and Leeds Poverty Truth Commission
- Co-production of alternative options and resources for people with specific additional barriers that may stop them engaging with digital inclusion activities (e.g. those with limited English comprehension skills, disability, mental health issues, cultural barriers)

Community Care Volunteering Hub

Food Clubs

95. Family Action are currently working with LCC Children's Services and the local CCV hub led by Leeds Mencap to see if there is a demand and suitable venues for a number of Food Clubs in BRH ward. A Food club differs to a Food bank in that there is a cost to people who want to "shop" at the food club, albeit this is heavily subsidised, approximately £3:50 for £15 worth of food. Unlike a food bank people can access food from the food club every week and have an increased choice about the type of food they receive. To date two venues have been secured, Richmond Hill Primary School and Nowell Mount Children's Centre, partners are currently exploring a number of options for a third venue in the ward.

96. Partners involved with the Community Care Volunteer hub will be asked to consider how they wish to work together beyond the 30th June (when the current government funding comes to an end). Voluntary Action Leeds are supporting hubs across the city to think about the most appropriate local structures to put in place to sustain and/or develop the support which has been put in place to help people through the pandemic.

Neighbourhood Plan

97. The Mabgate, Lincoln Green and Burmantofts Neighbourhood Plan held their first ever meeting of the Neighbourhood Forum. The Forum is the group of local residents and stakeholders that will ultimately prepare the plan which will positively influence the type of new development that will take place within the Neighbourhood. East Street Arts have been leading on the community engagement work for the plan during the past year and despite the obvious challenges that the pandemic has presented, they still managed to get 9 residents and 14 stakeholders attending this inaugural meeting. People who are interested in finding out more about the Neighbourhood Plan or who would like to join the forum can find out more here:

<https://www.eaststreetarts.org.uk/project/neighbourhood-plan/>

Active Travel

98. Funding has been secured to pilot an approach to increase Active Travel in Richmond Hill by activating specific destinations, encouraging a mode shift from vehicle usage to walk, cycle or scoot short distances. The focus being to identify key destinations within the Richmond Hill area and design bespoke solutions with the local community using coproduction and local assets to support behaviour change.

Gipton and Harehills

Covid Business Engagement

99. Following feedback from Environmental Health officers and Covid marshals after visiting businesses on the Harehills high streets, a multi-agency meeting chaired by Chief Officer Communities Shaid Mahmood was organised for 1st February 2021 where local data and intelligence was discussed. A number of key actions came out of this meeting, including the production of a Personal Protective Equipment (PPE) pack for small local businesses.

100. Funded by the Gipton and Harehills Ward Members' emergency Covid-19 funding pot, the packs comprised of face masks, hand sanitiser, posters and information to support the businesses at this time including how to order PPE through Leeds City Council at cost price. The distribution of these bags started on 22nd February to businesses on these popular high streets by Leeds City Council's Covid marshals as part of their regular visits to shopping areas in the city. Other areas of the city are now looking to replicate these packs, in an effort to show support to small businesses. The packs have been extremely well received by businesses to date.

Enhanced Testing in Harehills Area

101. On Wednesday 17th February, the government announced that there would be enhanced testing in place in parts of Harehills and small parts of surrounding areas, including Burmantofts and Roundhay. Following a multi-agency meeting on Thursday 18th February, a testing centre was set up with the Infinity Centre in Harehills and communications shared with local residents and partners.
102. To support community engagement, door knocking was supported by many different departments across the Council as well as the Red Cross. Migrant Community Networkers from the Migrant Access Project also took part, in order to use their valuable community language skills to accurately share messages with residents. People living and working in the community were given advice on how they can get tested, either through home testing or at the Infinity Centre, Conway Road, near the Bilal Mosque site.
103. An additional Mobile Testing Unit was also in place from Friday 26th February to Tuesday 2nd March at the Shine Business Centre on Conway Road to further assist the additional testing offer.
104. The testing will help the council and government understand the level of new variants in the city, so they are better informed and can plan their future responses.

Vaccination Engagement Work

105. As we move into the next phase of coronavirus, we look to encourage local uptake of the vaccine. Work is underway with between Public Health officers, the Leeds Clinical Commissioning Group and the Senior Localities Officer on behalf of the Communities Team to develop a resource that shares key, accurate information about the vaccines and responds, with evidence, to potential concerns. The Senior Localities Officer for Gipton and Harehills will work with Public Health to continue sharing concerns and to link in influencers this work to encourage uptake locally. Gipton and Harehills Ward Councillor have supported the local work planned with funding from their emergency Covid-19 budget.

Greener Gipton and Harehills Campaign

106. The second meeting for the Greener Gipton and Harehills Campaign took place on Tuesday 2nd February 2021 with a wide range of partners and

residents in attendance. Plans are starting to take shape with some exciting residents and partner-led initiatives forming, including the Gipton Approach Greening Project, the Harehills Road Green Scheme and walking, gardening and growing projects in the area. In order to keep residents up to date on the campaign and provide an accessible platform for engagement, a webpage has been set up on the Your Voice Leeds website specifically for the green campaign. Residents can sign up and subscribe to receive regular updates and to engagement in activities as part of the campaign. The website link is provided here: <https://yourvoice.leeds.gov.uk/greener-g-h-campaign>

107. A major focus of the scheme, as requested by local residents, will be on tree planting across the ward. As part of the Woodland Creation Scheme, from Monday 1st March, residents were invited to share their ideas for potential tree planting sites within the ward on Council land. The most popular sites will then have the associated checks necessary and the suitable sites will be brought to the April campaign meeting for further consultation on the next steps, including selecting the tree species.

108. The Gipton and the Harehills Neighbourhood Improvement Partnerships are currently paused whilst focussed Covid response work takes priority. Partnership meetings have taken place around the enhanced testing and mask compliance. It is hoped that the Neighbourhood Improvement meetings will recommence in due course.

Killingbeck and Seacroft

Denis Healey Centre

109. Improvement work in the Denis Healey Community Centre in South Seacroft continues. The most recent work has been a partnership between Seacroft Community on Top and the communities team, who have worked together to inform some community inspired art work. Additional decorating work in the centre continues. New kitchen appliances have been purchased in preparation for the community café.

110. The community's team were successful in an application to the Get Set Leeds Local fund from the Council's Active Leeds team, and £10,000 has been awarded. This will support the opening of the gym and will cover the remaining bits of equipment needed. Work on the community gym will recommence when the current lockdown restrictions are lifted. The gym will be a doorstep offer for the local community and will be run by the local community. Two local volunteers are currently completing a level 3 Gym Instructor course funded by

Yorkshire Sport Foundation. Further training opportunities have been secured for local people.

Seacroft Gardens Playground

111. Following community consultation conducted in partnership with Seacroft Community on Top, the procurement process for Seacroft Gardens playground has now commenced. Tender evaluation is set for March. The hope is that a contract will be awarded and work on site will follow. Funding for securing the entrances to the surrounding green area has also been secured, and this work will commence alongside the playground.

Healthy Holidays

112. Healthy Holidays projects have continued in Seacroft and the strong partnership approach remains. Recently for the February half term Fall into Place, LS14 Trust and Seacroft Community on Top worked in collaboration to provide over 150 families with food and activity boxes. The boxes were inspired by the journey and experience of a local family who have moved to Seacroft from Syria. The boxes included recipes to make Syrian inspired food and various craft activities. The boxes were well received and the families enjoyed them.

Digital Inclusion

113. Various partners in the ward are working on a digital inclusion project. The project is based on a donation model and involves people making donations of technology they no longer need. The hub for donations is Kentmere Community Centre. Partners from Chapel FM are wiping any donated devices and then Fall into Place and the Cluster are working together to identify people who need the devices. The project only recently started but some donations have already been received.

Seacroft Friends and Neighbours

114. Seacroft Friends and Neighbours are currently supporting over 500 older people per month in Seacroft with regular telephone contact, shopping, prescription pick up, technology loan and support. Staff also support with more complex case work offering older people support with issues such as personal health, finance, scams and crime prevention.

115. The group are currently supporting the Covid-19 vaccination effort locally with assisted door to door transport. They continue to follow Public Health England

transport guidance to offer safe transport for those needing help to any health related appointments. This has been welcomed by many the eldest a 96 year old lady on a snowy day with her walking frame was full of praise for the driver assisting her for her first vaccine.

116. The Seacroft Friends and Neighbours Wellbeing offer is expanding with two staff setting up a bereavement group offering peer support and the hope of the friendship that shared experiences may bring. Staff direct them to health professionals and are not aiming to replace trained bereavement counselling but instead to complement these other services.

Updates from Key Services

Community Hubs

Community Hub Buildings

117. The Community Hub sites have been adapted and are fully Covid safe, this has enabled them to continue to provide a key service to our communities. The Hubs staff are working with a combination of face to face work and home working to support the service.

Customer Services

118. Face to face services are currently limited to the following emergency enquiries:

- Booking telephone appointments
- Booking PC slots using Netloan and using Self Service PC's
- Collecting LWSS vouchers
- Providing proofs for LWSS
- Requesting Trussell Trust e-vouchers
- Posting out of Council Tax bills
- Temporary Parking Permits
- Raising repairs
- To Drop Off documents
- To Purchase Radar Keys
- Tenancy Termination Notices

Library/PC Usage

119. The Community Hubs offer a combination of a browsing and non-browsing model dependant on the current government restrictions in the city.

120. Currently due to lockdown restrictions the Hubs are using our non-browsing model. Customers can reserve books via the “Order and Collect” service or book a 45 minute PC session which can be extended if needed.

121. A new ‘Selection Bags’ service is also available for customers to order. These have a selection of six books for adults or children ranging from crime, romance, key stages and picture books.

Jobshops

122. The Jobshops are currently working remotely with customers via email and telephone, offering the full range of services including assisting with job searching, creating or updating a CV, completing job applications and preparing for interviews.

Community Hubs Case study

123. “A member of the Community Hubs staff was tracking their customers and called a regular service user to see how he was getting on. He disclosed he was struggling and asked us for help. He lives alone in a high rise flat and was socially isolated from friends, family and local services due to Covid-19. We organised the loan of an iPad for the customer and through virtual ongoing support, he is now using his new digital skills to apply for jobs, bid for a house, socially connect with family and friends, he has also joined the library and is due to commence an online literacy course in the near future.”

Support for Migrant Communities

124. POMOC virtual drop in sessions are run weekly in partnership with the Migrant Access Programme team and the Department of Work and Pensions. There are three sessions per week each lasting two hours for local Romanian/Roma and Czech/Slovak communities.

125. The Hubs take a multi-agency approach aims to support the residents with help to access Universal Credit and benefits and aim to increase support and engagement opportunities between EU nationals and services during the Covid-19 crisis. Staff also work to build confidence and trust in local institutions and empower the migrant community to navigate local services and particular customer access support. This support will also expand shortly to include our Spanish communities.

Health and Wellbeing

126. Virtual weekly yoga sessions have been set up with funding from the Inner East Community Committee for Harehills & Gipton residents for fifteen weeks initially. Feedback from attendees has been very positive around physical and mental wellbeing, alongside combatting social isolation.

127. The Compton Centre and Burmantofts Community Hub continue to work in close partnership with Burmantofts Richmond Hill Hub MECAP to act as a

distribution pick up point of receiving, storing and handing out food bags and food vouchers for their designated customers.

Safer Sleeping Scheme

128. The Compton Centre community Hub continue to work in partnership with the Children Centres and Public Health in issuing Moses baskets bundles to vulnerable families. Moses baskets. Moses basket have been purchase with the recent funding we received from the Inner East Community Committee to help buy an additional thirty four Moses baskets bundles. The most recent referral was for a family who had triplets.

Santa Dash

129. Over the Christmas period The Compton Centre Hub delivered a Santa Dash with Santa and Elves in the most deprived areas in the Inner East. During the Covid-19 pandemic, children and families have been in lockdown, not in school and the aim of the Santa dash was for the children to see Santa and Elves deliver a small gift which lighted up their faces at the festive time of year.

Home working and other voluntary duties

130. Since March 2020 the team have also assisted in various other service areas including; delivering food parcels, packing food in the warehouse, Library Befriending Service, Q Matic telephone appointments, Test and Trace, Local welfare Support Scheme line, Council Tax and Benefits telephone line.

Census Support Centre

131. From 21 March 2021 The Compton Centre is one of 4 Hubs across Leeds that will be acting as a Census Support Centre. The Census is now digital so has to be completed online. There may be some residents who are not digitally savvy, so the team have nominated staff at the Hubs who will assist in completing the Census application for these residents.

Housing Leeds

Update from the Housing Advisory Panel (HAP)

Inner East

132. In 2020-21 the Inner East HAP in 2020-21 have supported 3 community and 3 environmental related projects since the last report in January 2021. Funded projects include:

- 1, Time Capsule at St Hilda's Church £500
- 2, Beech Walk 2 waste bins £461.00
- 3, Torre Mount play area £5,000
- 4, Tree Orchards across the ward £2500 from HAP £1,000 from Area Manager
- 5, Fencing at Shakespeare Avenue £2,000 from HAP £1,500 from Area Manager
- 6, Listening Skill project Neurkas Soup Kitchen £1,000

133. Please see the budget committed for 2020-21. The Inner East HAP are on track to 100% of the full budget.

Budget by HAP themes	Number of projects submitted	Number of projects approved	Amount Committed by Panel	% committed	Other funding contributions
Environment & Housing	23	12	£ 20,843.12	41.74%	£ 40,489.73
Health & Well-being	30	16	£ 15,163.45	30.36%	£ 29,285.00
Community Safety	2	2	£ 3,940.00	7.89%	£ 4,000.00
Employment & Skills	5	3	£ 3,236.33	6.48%	£ 9,622.66
Inner East Total	60	33	£ 43,182.90	86.47%	£ 83,397.39

Budget by Ward Area	Number of projects submitted	Number of projects approved	Amount Committed by Panel	% committed	Other funding contributions
GiptonandHarehills	21	13	£ 14,032.90	28.10%	£ 33,372.66
BurmantoftsandRichmondH	35	18	£ 26,850.00	53.77%	£ 42,324.73
MultipleIE	1	1	£ 300.00	0.60%	£ 6,700.00
AllIE	3	1	£ 2,000.00	4.00%	£ 1,000.00
Inner East Total	60	33	£ 43,182.90	86.47%	£ 83,397.39

Outer East

HAP funded Activity

- **Brooklands Towers Car park:** The car park was repainted to establish clear bays for Ambulances and disabled tenant of the block.
- **Green Guardians Scheme:** Funding for a Vulnerable Garden Scheme to assist tenants with vulnerability's by getting gardens to an easy manageable level. It also gives the opportunity for the community to volunteer and help with gardens, restrictions permitting.
- **Brooklands Lane/Avenue:** Chicanes installed in the ginnel to prevent the cars/quads driving through and causing injury to pedestrians.
- **Seacroft Gardens:** Funding awarded to install chicanes to the perimeter to prevent the ongoing issue of quads for when the new park is installed.
- **Seacroft Parks:** Funding to provide picnic tables for Seacroft Gardens new park once installed.
- **Queensview:** Funding awarded go install three socially distanced table to allow tenants to sit safely outside when restriction's allow.

Projects

- **Your Voice Leeds:** Hosted a consultation on the new builds at Barncrofts for ideas/questions of local residents.

- **Street Naming for new builds Tarnside/Mardales:** The Outer East Tennant Engagement Officer is running a street naming competition with schools and residents of the local area for suggestions for 2 new street names.
- **Seacroft Wombles:** A new group has formed in Seacroft for litter picking which is proving to be a huge success. They are being provided with 2 dog waste bag dispensers as a trial to assist in the area.
- **Consultations Tarnside/Mardale:** A full door to door consultation has been done to all surrounding residents regarding removal of fencing and any questions. Happy to report we had nobody against the scheme and they gave full support to the new builds.
- **Pre-existing Fencing to the new build site Tarnside/Mardale:** Wates have agreed to store the fencing rather than it go waste. We will be submitting a HAP Application in April to cover costs of reinstalling into another site in Seacroft that is in desperate need of fencing.

A suggested reduction in the Inner and Outer HAP budget for 2021-22 of 10% will be presented at the next budget meeting.

Corporate Considerations

Consultation and Engagement

134. The Community Committee has, where applicable, been consulted on information detailed within the report.

Equality and Diversity/Cohesion and Integration

135. All work that the Communities Team are involved in is assessed in relation to Equality, Diversity, Cohesion and Integration. In addition, the Communities Team ensures that the wellbeing process for funding of projects complies with all relevant policies and legislation.

Council Polices and City Priorities

136. Projects that the Communities Team are involved in are assessed to ensure that they are in line with Council and City priorities as set out in the following documents:

1. Vision for Leeds 2011 – 30
2. Best City Plan
3. Health and Wellbeing City Priorities Plan
4. Children and Young People's Plan
5. Safer and Stronger Communities Plan
6. Leeds Inclusive Growth Strategy

Resources and Value for Money

137. Aligning the distribution of community wellbeing funding to local priorities will help to ensure that the maximum benefit can be provided.

Legal Implications, Access to Information and Call In

138. There are no legal implications or access to information issues. This report is not subject to call in.

Risk Management

139. Risk implications and mitigation are considered on all projects and wellbeing applications. Projects are assessed to ensure that applicants are able to deliver the intended benefits.

Conclusions

140. The report provides up to date information on key areas of work for the Community Committee.

Recommendations

141. The Community Committee is asked to note the content of the report and comment as appropriate.

Background documents¹

142. None.

¹ The background documents listed in this section are available for inspection on request for a period of four years following the date of the relevant meeting Accordingly this list does not include documents containing exempt or confidential information, or any published works Requests to inspect any background documents should be submitted to the report author.

This page is intentionally left blank



**Inner East Community Committee & COVID-19
Groups**

FACEBOOK highlights

25th January 2021 – 26th February 2021

Appendix 1

Since 25th January 2021 the Inner East Community Committee Facebook page has gained **7 new page likes** putting the total 'likes' at 1052 and currently has **1269 followers** (an increase of 54 since the last committee meeting).

This means that this is the **second** most popular Community Committee page in the last 28 days.

There are two things to note in general:

- 'reach' is the number of people the post was delivered to
- 'engagement' is the number of reactions, comments or shares

Engagement tends to be a better way of gauging if people are interested and have read the posts because they wouldn't have interacted with it otherwise. For example, a post might reach 1,000 people but if they all scroll past and don't read it, the engagement is 0 and it hasn't been an effective way for the Community Committee to communicate.

Having said that, all posts can be read without any further interaction!!


The most popular post since the 25th January 2021 the posting regarding The Leeds Food Club:

- has been liked, commented on or shared 47 times
- has reached a total of 2003 people

The following below are screenshots of the most popular three posts since the 25th January 2021. Alongside it are the figures for how many people were 'reached' and how many people 'engaged' with the post.

1st Place – The Leeds Food Club

2003 people had this post delivered to them and it had 27 post clicks, with 47 reactions, comments and shares.



Leeds City Council Inner East Community Committee
Published by Grace Young [?] · 10 February · 🌐

Leeds Food Club provides families good quality food at low cost. If you live or work near the Henry Barren Centre in Gipton you could join the new food club based at the centre. It costs just £1 a year for your family to become a member and once you've joined you can buy a bag of food every week worth around £15 for just £3.50.

Leeds FOOD Club
Food On Our Doorstep
Good-quality food at a low price

Family Action has launched FOOD (Food On Our Doorstep) Clubs in Leeds to provide families with good-quality food at a low cost, while also reducing food waste. It costs just £1 a year for your family to become a member.

Once you've joined, you can purchase a bag of tasty food items every week worth approx. £15 for just £3.50!

To become a member you must live or work within 15 minutes of the club.

Performance for your post

2,003 People Reached

47 Reactions, comments & shares

22 Like	3 On post	19 On shares
3 Love	1 On post	2 On shares
1 Comments	0 On Post	1 On Shares
21 Shares	21 On Post	0 On Shares

27 Post Clicks

4 Photo views	0 Link clicks	23 Other Clicks
----------------------	----------------------	------------------------

NEGATIVE FEEDBACK


0 Hide post	0 Hide all posts
0 Report as spam	0 Unlike Page

Reported stats may be delayed from what appears on posts



2nd Place – Harehills Festive Video Feedback Survey

1229 people had this post delivered, with 46 post clicks with 23 reactions, comments & shares.



Leeds City Council Inner East Community Committee
Published by Grace Lawrenson [?] · 28 January · 🌐

Calling all Harehills residents! Did you take part in the Harehills Festive Video? Whether you did or not, the event committee would love to get your feedback and your ideas for future community events in Harehills. Please complete the below short survey to have your say and sign up to get involved:
<http://bit.ly/2YgFm3l>

Performance for your post

1,229 People Reached

23 Reactions, comments & shares

9 Like	0 On post	9 On shares
1 Love	0 On post	1 On shares
5 Comments	0 On Post	5 On Shares
8 Shares	4 On Post	4 On Shares

46 Post Clicks

1 Photo views	12 Link clicks	33 Other Clicks
----------------------	-----------------------	------------------------

NEGATIVE FEEDBACK

0 Hide post	0 Hide all posts
0 Report as spam	0 Unlike Page



3rd Place – Replacement Bins

530 people had this post delivered to them. There were 37 post clicks and 47 reactions, comments and shares

Leeds City Council Inner East Community Committee
Published by Ruth Lcc [?] · 5 February · 🌐

If you need a replacement bin these can be ordered online at www.leeds.gov.uk/.../bins-and-recycling/new-or-replacement-bin.

- All green bins are free of charge
- Replacement black bins have a charge of £15.40, unless the bin has been broken during emptying or has fallen in the wagon in which case the bin is free... [See more](#)

Performance for your post

530 People Reached		
47 Likes, Comments & Shares		
21 Likes	2 On Post	19 On Shares
18 Comments	1 On Post	17 On Shares
8 Shares	8 On Post	0 On Shares
37 Post Clicks		
0 Photo views	22 Link clicks	15 Other Clicks

NEGATIVE FEEDBACK

0 Hide post	0 Hide all posts
0 Report as spam	0 Unlike Page

3rd most popular post

COVID-19 Facebook Groups

The Communities Team have set up **33** ward based **Coronavirus Help Facebook Groups** as a way of promoting services, supporting communities and cascading information in an attempt to tackle the Coronavirus pandemic. Key charities, voluntary groups, community groups, Councillors, as well as the wider population in the local community are all invited to join the pages.

As well as key messages from the main Leeds City Council Facebook Page being used to deliver information to each ward, the pages are also there to generate discussion and debate but also hopefully facilitate conversations around being neighbourly during the national pandemic and assist if possible in some of the volunteering efforts.

To date, **Burmantofts and Richmond Hill** has **85** members, **Gipton and Harehills** has **125** members and **Killingbeck and Seacroft** has **146** members.

The committee is asked to note the specific **Coronavirus Facebook Ward Pages** and are invited to join the pages in an attempt to increase traffic.

- Burmantofts and Richmond Hill:
<https://www.facebook.com/groups/207593427013706>
- Gipton and Harehills:
<https://www.facebook.com/groups/684218675719062>
- Killingbeck and Seacroft:
<https://www.facebook.com/groups/206345057352165>

This page is intentionally left blank



Committee - Finance Report

Report of: Head of Stronger Communities

Report to: Inner East Community Committee- Burmantofts & Richmond Hill, Gipton & Harehills and Killingbeck & Seacroft

Report author: Ruth Tiernan, Localities Officer. Tel- 0113 5351085

Date: 17th March 2021

For Decision/to note

Inner East Community Committee - Finance Report

Purpose of report

1. This report provides the Community Committee with an update on the budget position for the Wellbeing Fund, Youth Activity Fund, Capital Budget, as well as the Community Infrastructure Levy Budget for 2020/2021.

Main issues

2. Each Community Committee has been allocated a Wellbeing budget (revenue and capital) and Youth Activities Fund which it is responsible for administering. The aim of these budgets is to support the social, economic and environmental wellbeing of the area and provide a range of activities for children and young people, by using the funding to support projects that contribute towards the delivery of local priorities.
3. A group applying to the Wellbeing Fund must fulfil various eligibility criteria, including evidencing appropriate management arrangements and financial controls are in place; have relevant policies to comply with legislation and best practice e.g. safeguarding and equal opportunities and be unable to cover the costs of the project from other funds.
4. Wellbeing funding cannot be paid retrospectively. An application form must be submitted and approved by the Community Committee before activities or items being purchased through wellbeing funding are completed or purchased.
5. The amount of wellbeing funding provided to each committee is calculated using a formula agreed by Council, taking into consideration both population and deprivation of an area.

6. Capital (CRIS) injections are provided as a result of council assets being sold. 5% of the sale price (up to a maximum of £100k) of a council asset is pooled city-wide and redistributed to the Community Committee areas on the basis of deprivation. The Community Committee will receive a new capital injection every 6 months.
7. Each Community Committee has also been allocated a Community Infrastructure Levy budget. For each CIL contribution, Leeds City Council retains up to 70-80% centrally, 5% is needed for administration and 15-25% goes to be spent locally. The money will be vested with the local Town or Parish Council if applicable, or with the local Community Committee and spend decided upon by that body. This local money is known as the 'Neighbourhood Fund' and should be spent on similar projects to the Wellbeing Fund (capital).
8. The Inner East Community Committee area has no Parish or Town Councils. This means that the money for the Inner East will be administered by the Inner East Community Committee.
9. It was agreed at Inner East Community Committee on the 25th September 2019 that CIL monies for Burmantofts & Richmond Hill, Gipton & Harehills and Killingbeck & Seacroft would be split equally three-ways.
10. The Communities Team work with members of the Community Committee to develop a plan to spend CIL funding on local infrastructure projects. This is on a case by case basis.
11. Projects eligible for funding by the Community Committee could be community events; environmental improvements; crime prevention initiatives, or opportunities for sport and healthy activities for all ages. In line with the Equality Act 2010, projects funded at public expense should provide services to citizens irrespective of their religion, gender, marital status, race, ethnic origin, age, sexual orientation or disability; the fund cannot be used to support an organisation's regular business running costs; it cannot fund projects promoting political or religious viewpoints to the exclusion of others; projects must represent good value for money and follow Leeds City Council Financial Regulations and the Council's Spending Money Wisely policy; applications should provide, where possible, three quotes for any works planned and demonstrate how the cost of the project is relative to the scale of beneficiaries; the fund cannot support projects which directly result in the business interests of any members of the organisation making a profit.
12. Any request for funding would involve discussions with appropriate ward members. Where projects do not have support from the Community Committee and are not approved, applicants are offered further discussions and feedback if this is requested.
13. In order to provide further assurance and transparency of all decisions made by the Community Committee, any projects that are not approved will be reported to a subsequent Community Committee meeting.
14. Sometimes urgent decisions may need to be made in between formal Community Committee meetings regarding the administration of wellbeing and youth activity budgets and also regarding the use of the Community Infrastructure Levy (CIL) Neighbourhood Fund which has been allocated to the Community Committee. Alongside the Committee, designated officers have delegated authority from the Director of Communities and Environment to take such decisions.

15. The Community Committee has previously approved the following ‘minimum conditions’ in order to reassure Members that all delegated decisions would be taken within an appropriate governance framework, with appropriate Member consultation and only when the following ‘minimum conditions’ have been satisfied:

- a. consultation must be undertaken with all committee/relevant ward members prior to a delegated decision being taken;
- b. a delegated decision must have support from a majority of the Community Committee elected members represented on the committee (or in the case of funds delegated by a Community Committee to individual wards, a majority of the ward councillors), and;
- c. details of any decisions taken under such delegated authority will be reported to the next available Community Committee meeting for members’ information.

16. Members are reminded that the necessary scrutiny of applications to satisfy our own processes, financial regulations and audit requires the deadline for receipt of completed applications to be at least five weeks prior to any Community Committee. Some applications will be approved via Delegated Decision Notice (DDN) following consultation with Members outside of the Community Committee meeting cycle.

Wellbeing Budget Position 2020/2021

17. The total revenue budget approved by Executive Board for 2020/2021 was **£216,720.00**. **Table 1** shows a carry forward figure of **£141,746.67** which includes underspends from projects completed in 2019/2020. **£41,925.62** represents wellbeing allocated to projects in 2019/2020 and not yet completed. The total revenue funding available to the Community Committee for 2020/2021 is therefore **£400,392.29**. A full breakdown of the projects approved or ring-fenced is available on request.

18. It is possible that some of the projects may not use their allocated spend. This could be for several reasons, including the project no longer going ahead, the project not taking place within the dates specified in the funding agreement, or failure to submit monitoring reports. Due to this the final revenue balance may be greater than the amount specified in Table 1.

19. The Community Committee is asked to note that there is currently a remaining balance of **£25,010.93** remaining. This figure includes any underspend from projects and ring fenced sums. A full breakdown of the projects is listed in **Table 1** and is available on request.

20. TABLE 1: Wellbeing revenue 2020/2021

	£
INCOME: 2020/21	£216,720.00
Balance brought forward from previous year	£141,746.67
Less projects brought forward from previous year	£41,925.62
TOTAL AVAILABLE: 2020/21	£258,645.62

Area wide ring fenced projects	£
Small Grants and Skips	£14,000
Community Engagement	£3,600
Tasking	£9,000
Christmas Lights	£15,000
Inner East Youth Summit	£1,500

Total spend: Area wide ring fenced projects	£43,100.00
--	-------------------

		Burmantofts & Richmond Hill	Killingbeck & Seacroft	Gipton & Harehills
Ward Projects	£258,645.62	97,531.32	£88,581.29	£75,533.01
Small Grants & Skips	£14,000	£5,666.67	£5,666.67	£2,666.66
Community Engagement	£3,600	£1,200	£1,200	£1,200
Tasking	£9,000	£3,000	£3,000	£3,000
Christmas Lights	£15,000	£0	£0	£15,000
Inner East Youth Summit	£1,500	£500	£500	£500
Covid-19 Support	£60,000	£20,000	£20,000	£20,000
Crèche	£2,911.20	£728.96	£182.24	£2,000
Youth Distance Support	£6,720	£6,720	£0	£0
Leeds Watch Visits	£4,500	£0	£0	£4,500
Money Buddies- Ebor Gardens	£1,535	£1,535	£0	£0
Gipton and Harehills Football Project	£5,600	£0	£0	£5,600
Denis Healy Motorbike Project	£2,867.48	£0	£2,867.48	£0
Fall Into Place	£11,200.00	£0	£11,200.00	£0
Friday Youth Hub	£6,800	£0	£6,800	£0
Boggart Hill Outreach	£8,000	£0	£8,000	£0
Advice Drop-In	£4,000	£4,000	£0	£0
Youth Support Project	£2,400	£2,400	£0	£0
Wellbeing In Wellies	£4,435	£1,490.16	£585.42	£2,359.42
Health and Wellbeing Post-Lockdown	£1,942	£1,942	£0	£0
Learn and Save	£2,500	£2,500	£0	£0
Seacroft Community Hub Money Buddies	£4,733	£0	£4,733	£0
Summer Activities 2020	£3,000	£0	£0	£3,000
Summer Youth Activities	£5,000	£0	£0	£5,000
Safer Sleeping Project	£1,400	£0	£0	£1,400
Bonfire Night Activities	£4,000	£0	£0	£4,000
Saxton Gardens Awning	£1,667.50	£1,667.50	£0	£0
Bilal Centre Youth Group	£2,800	£0	£0	£2,800
Street Outreach	£2,841	£1,420.50	£0	£1,420.50
Seacroft Bin Improvements	£671	£0	£671	£0
St Aiden's Community Share	£1,937	£0	£0	£1,937
Nowell Mount Hub Furniture & Equipment	£5,000	£5,000	£0	£0
Life Connections After School Club	£3,000	£3,000	£0	£0
Zooms for Fun, Packages for One	£10,833.75	£0	£10,833.75	£0
Beckett Street Raised Beds	£1,390.09	£1,390.09	£0	£0
2 Way Street	£1,528.67	£1,528.67	£0	£0
Denbeigh Trees	£1,034	£0	£0	£1,034
Virtual Hubs	£2,800	£2,800	£0	£0
Haslewood Drive Temporary CCTV	£1,488	£1,488	£0	£0
Premier League KICKS	£10,000	£10,000	£0	£0
Total spend: Area wide + ward projects	£233,634.69	£79,977.55	£76,239.62	£76,383.58
Balance remaining (Total/Per ward)	£25,010.93	£17,553.77	£12,341.67	£0*

*Underspend from previously completed projects was used to cover the overspend from these totals.

Wellbeing projects for consideration for pre-approval from the Inner East Community Committee 2021/2022 Wellbeing allocation.

The following projects are presented to Members for their consideration:

21. **Project Title:** Places to Ride

Name of Group or Organisation: Active Leeds

Total Project Cost: £32,000

Amount proposed (Wellbeing): £8,000

Wards covered: Burmantofts and Richmond Hill

Project Description:

Funding to develop cycling hubs at three key sites across the ward. Sites will include opportunities to learn to ride; equipment hire and new trails. The project aims to increase opportunities for Cycling across the ward by removing some of the barriers to get into cycling and make it more accessible for all.

Community Committee Priorities:

- Reduce health inequalities, promote healthy lifestyles and reduce social isolation.
- Improve the local environment.

22. **Project Title:** Refurbishment of Torre Mount Play Area

Name of Group or Organisation: LCC Parks & Countryside

Total Project Cost: £12,100

Amount proposed (Wellbeing): £5,000

Wards covered: Burmantofts and Richmond Hill

Project Description:

Parks and Countryside will undertake work at Torre Mount to improve the recreational facilities for local residents. Funding will be used to repaint the MUGA, renew the basketball hoop, re-mark the large football pitch with new markings and renew the damaged fencing.

Community Committee Priorities:

- Reduce health inequalities, promote healthy lifestyles and reduce social isolation.
- Improve the local environment.

23. **Project Title:** Gardening Club

Name of Group or Organisation: Learning Partnerships

Total Project Cost: £2,293

Amount proposed (Wellbeing): £765

Wards covered: Killingbeck and Seacroft

Project Description:

Funding will be used to start a weekly gardening after school club for children at Grange Farm Primary School in Seacroft. The gardening club will provide an opportunity for children to be outdoors and active and for them to grow their own flowers, fruit and vegetables, thus promoting a healthier lifestyle both physically and mentally.

Community Committee Priorities:

- Reduce health inequalities, promote healthy lifestyles and reduce social isolation.
- Provide activities for young people and give them a voice and influence

24. **Project Title:** Gipton Approach Project

Name of Group or Organisation: Space2

Total Project Cost: £5,439

Amount proposed (Wellbeing): £3,000

Wards covered: Gipton and Harehills

Project Description:

Funding will be used to transform the central reservation area of Gipton Approach by planting trees, wild flowers, fruit and vegetables that the whole community can enjoy.

Community Committee Priorities:

- Reduce health inequalities, promote healthy lifestyles and reduce social isolation.
- Improve the local environment.

Monitoring Information

25. As part of their funding agreements, all projects which have had funding approved by the Community Committee are required to provide update reports on the progress of their project. These reports are so that the Community Committee can measure the impact the project has had on the community and the value for money achieved.

26. Detailed below is a project update that the Communities Team has received since the last meeting of the Community Committee on January 14th 2021.

The Tribe Youth Group

27. The Tribe were awarded Youth Activity Funding from the Burmantofts and Richmond Hill and Killingbeck and Seacroft wards for their youth group and “I Am Me” project.

28. Throughout the pandemic The Tribe has still managed to successfully deliver their project through a combination of outdoor and online sessions.

29. The group have adapted to the government guidance throughout the year and operated in bubbles to ensure that you people can still meet safely.



30. The Tribe have run a number of remote activities including supporting young people to learn to cook and bake.



31. Online and in person sessions have taken place several times a week and include the “I Am Me” project which focuses on young people’s health and fitness. Sessions were delivered on providing advice on mental and physical health including healthy eating, body and fitness as well as working as a team and confidence building.



32. The project has been really well received and the young people and has had really good engagement from young people throughout the course of the project.

Youth Activities Fund Position 2020/2021

33. The total available for spend for the Inner East Community Committee in 2020/2021, including carry forward from previous year, was **£98,136.91**

34. The Community Committee is asked to note that so far, a total of **£57,135.87** has been allocated to projects, as listed in **Table 2**.

35. The Community Committee is also asked to note that there is a remaining balance of **£9,911.09** in the Youth Activity Fund. This figure includes any underspend from projects. A full breakdown of the projects is listed in **Table 2** and is available on request.

36. TABLE 2: Youth Activities Fund 2020/2021

	£
INCOME: 2020/21	£62,140.00
Balance brought forward from previous year	£31,089.91
Less projects brought forward from previous year	£98,136.91
TOTAL AVAILABLE: 2020/21	£67,046.96

		Burmantofts & Richmond Hill	Killingbeck & Seacroft	Gipton & Harehills
Ward Projects	£67,046.96	£25,294.24	£21,030.66	£20,722.06
20 years of DAZL	£4,848.40	£1,616.13	£1,616.14	£1,616.13
DJ Workshops	£2,500	£1,250	£0	£1,250
The Tribe Youth Group & NxtGen	£8,700.00	£4,350.00	£4,350.00	£0
Harehills Play Streets	£5,095.00	£0	£0	£5,095.00
Inner East Cycling Project	£8,600	£2,867.00	£2,866.00	£2,867.00
Kidz Club Central & Home Visiting	£4,664.72	£1,554.91	£1,554.90	£1,554.91
Triathlon Activities	£400	£200	£0	£200
Global Mash Up	£5,000	£5,000	£0	£0
Empowering Girls	£5,323.00	£0	£0	£5,323.00
Kentmere Holiday Camp	£1,223.10	£0	£1,127.50	£0
Youth Music Project	£2,273.00	£0	£2,273.35	£0
WLAC Activity Program	£3,133.33	£1,566.66	£1,566.67	£0
Summer Activities	£3,000	£0	£0	£3,000
Out of School Activities	£2,375.32	£1,187.66	£1,187.66	£0
Total spend: Area wide + ward projects	£57,135.87	£19,592.36	£17,542.22	£20,906.04
Balance remaining (Total/Per ward)	£9,911.09	£5,701.88	£4,392.19	£0*

*Underspend from previously completed projects was used to cover the overspend from these totals.

Youth Activity Fund projects for consideration for pre-approval from the Inner East Community Committee 2021/2022 Youth Activity Fund allocation.

37. Project Title: Life in Leeds

Name of Group or Organisation: The Youth Association

Total Project Cost: £4,845

Amount proposed (YAF): £4,438

Wards covered: Burmantofts and Richmond Hill

Project Description:

The Life in Leeds project is a program to build a better understanding between young people and the wider community of what it's like as a young person growing up in Leeds in 2021. The program will help young people gain new skills and knowledge around knife crime, drugs awareness and positive relationships through Music, podcasts, and video blogs.

Community Committee Priorities:

- Provide activities for young people and give them a voice and influence
- Reducing crime with a focus on domestic violence

38. The Community Committee is asked to note that there is a remaining balance of **£9,791.95** in the Small Grants and Skips fund with a ward breakdown of the following; Burmantofts and Richmond Hill **£5,241.67**, Gipton and Harehills **£918.76** and Killingbeck and Seacroft **£3,631.52**. **Table 3** outlines approved projects.

39. TABLE 3: Small Grants & Skips 2020/2021

Project	Organisation/Dept	Ward (s)	Amount approved
Gipton Fete Development	East Leeds Project	Gipton and Harehills	£500
Settee to 3K	Family Fit Yorkshire CIC	Killingbeck and Seacroft	£240
Skip for CATCH	CATCH	Gipton and Harehills	£126.65
Skip for Oakwood Lane Allotments	Oakwood Lane Allotments	Killingbeck and Seacroft	151.84
Towers Living Community Bingo	Towers Living Community	Killingbeck and Seacroft	£195
16 Days of Action	Cross Gates and Manston Children`s Centre	Killingbeck and Seacroft	£500
Virtual Yoga	The Compton Centre Hub	Gipton and Harehills/ Burmantofts and Richmond Hill	£450
Nubian Noire	Cultural Arts Heritage Circle	Gipton and Harehills	£196.25
Santa Dash	The Compton Centre Hub	Gipton and Harehills/ Burmantofts and Richmond Hill	£400
Irish History Month Activities	Irish Arts	Killingbeck and Seacroft	£500
Ladies Mental Health Support Forum	Successful Mindset Ltd	Killingbeck and Seacroft	£435
New Furniture	Junior Sports Hub	Gipton and Harehills	£500
Totals			£4,194.74

Covid-19 ward allocation 2020/21

40. The table below illustrates the grants that have been approved by members through the £20k ward based Wellbeing budget set aside to support the local community through the Covid-19 pandemic. Burmantofts and Richmond Hill currently have **£2,586.69**, Gipton & Harehills have **£0** remaining and Killingbeck & Seacroft have **£8,031.00**. Members are asked to consider whether they would like to top up any of their Covid-19 ward pots using funds from their 2020/21 Wellbeing allocation.

41. TABLE 4: Inner East Covid-19 Wellbeing Ward Allocation 2020/21

Ward Projects	£60,000	Ward Split		
		Burmantofts and Richmond Hill	Gipton & Harehills	Killingbeck & Seacroft
		£20,000	£20,000	£20,000
Online yoga classes	£180	£0	£180	£0

RHCA- Fridge	£312.94	£312.94	£0	£0
St Aiden's Church - Shopping vouchers	£500	£0	£500	£0
MENCAP- Hub support	£3,500	£3,500	£0	£0
Zest- Vegrocks competition grow boxes	£289.50	£0	£289.50	£0
Neruka's Soup kitchen - Food supplies	£1,000	£0	£1,000	£0
Action for Gipton Elderly - Food supplies	£1,000	£0	£1,000	£0
PAFRAS, Neruka's Soup Kitchen, CATCH & St Aiden's Church - Toiletry supplies	£2,500	£0	£2,500	£0
Migrant Community Networker	£300	£0	£300	£0
LS14Trust - Hub support	£4,323	£0	£0	£4,323
PAFRAS - Toiletry and food supplies	£1,000	£1,000	£0	£0
CATCH- Hub support	£4,230.50	£0	£4,230.50	£0
HOPE	£1,000	£1,000	£0	£0
LS14 Trust- Hub support	£3,823	£0	£0	£3,823
Circle of Life Women Together – Hygiene Packs	£508.50	£508.50	£0	£0
Communities Team- Youth Support	£1,200	£0	£1,200	£0
CATCH- Hub Support	£1,279.50	£0	£1,279.50	£0
Nerukas Soup Kitchen- Freezer	£500	£0	£500	£0
Fall Into Place - Playboxes	£2,000	£1,000	£1,000	£0
Money Buddies- PPE Equipment	£1,200	£1,200	£0	£0
Mafwa- Tablets for remote sessions	£499	£499.90	£0	£0
St Vincent's- Food Supplies	£1,000	£1,000	£0	£0
Richmond Hill Elderly Action - Food Supplies	£1,800	£1,800	£0	£0
LS14 Trust- Hub support	£3,823	£0	£0	£3,823
Touchstone- Food Supplies	£2,000	£2,000	£0	£0
St Hilda's – Food Supplies	£1,000	£1,000	£0	£0
Gipton Children's Centre- Activity Packs	£500	£0	£500	£0
Proverbs 31 – Budgeting and Financial Support	£3,737.95	£1,868.97	£1,868.98	£0
St Hilda's- Lockdown Challenge	£723	£723	£0	£0
Total	£46,729.89	£17,413.31	£16,348.48	£11,969.00
Balance remaining (Total/Per ward)	£13,270.11	£2,586.69	£0*	£8,031.00

*Members have approved for the remaining Covid-19 allocation for Gipton and Harehills ward to be returned to their wider 2020/21 Wellbeing allocation.

Covid-19 Government Grant allocation 2020/21

42. The table below illustrates the grants that have been approved by members through the £10k ward per ward funding allocation received by central government to support for projects responding to the Covid-19 pandemic. Burmantofts and Richmond Hill currently have £0, Gipton & Harehills have £800 remaining and Killingbeck & Seacroft have £2,162.

43. TABLE 5: Inner East Covid-19 Government Grant Allocation 2020/21

Ward Projects	£30,000	Ward Split		
		Burmantofts and Richmond Hill	Gipton & Harehills	Killingbeck & Seacroft
		£10,000	£10,000	£10,000
The Compton Centre - One4All vouchers	£450	£0	£450	£0
The Tribe- IT Equipment	£1,772	£1,772	£0	£0

St Hilda's – New Fridge	£394.99	£394.99	£0	£0
PHAB Club – Zoom Sessions	£180	£0	£0	£180
Circle of Life Women Together- Hygiene packs	£508	£0	£508	£0
LCC Public Health – Project Worker	£3,158	£0	£0	£3,158
Black Health Initiative- Food Supplies	£300	£0	£300	£0
LCC Parks & Countryside – Natter Benches	£3,500	£0	£0	£3,500
LCC Communities Team – PPE Boxes	£1,265	£0	£1,265	£0
LCC Communities Team- Awareness Raising Project	£2,000	£0	£2,000	£0
Kidz Klub- Zoom Sessions	£876	£0	£876	£0
St Aiden's- Food Hub	£150	£0	£150	£0
LS14 Trust – Kentmere IT Support	£1,000	£0	£0	£1,000
Kidz Klub – Activity Packs	£1,559	£779.50	£779.50	£0
Youth Service- Online Sessions	£1,512	£1,512	£0	£0
LCC Hubs - Devices for Hubs	£2,974.01	£2,974.01	£0	£0
RHEA- Digital Classes	£2,400	£2,400	£0	£0
Your Back Yard- Older Peoples Digital Support	£167.50	£167.50	£0	£0
Nerukas Kitchen- IT Support	£470	£0	£470	£0
St Monikas House -Food and Toiletries	£500	£0	£500	£0
St Aidans Church - Food and Toiletries	£1,901.50	£0	£1,901.50	£0
Total	£27,038	£10,000	£9,200	£7,838
Balance remaining (Total/Per ward)	£2,962	£0	£800	£2,162

Capital Budget 2020/201

44. The Inner East Community Committee has a Capital budget of **£79,822** available to spend. The breakdown of funds available to spend are as follows; Burmantofts & Richmond Hill: **£21,960.68**, Gipton & Harehills: **£47,817.33** and Killingbeck & Seacroft: **£10,043.99** which is detailed in **Table 6**.

45. TABLE 6: Capital 2020/2021

	£	Burmantofts & Richmond Hill	Killingbeck & Seacroft	Gipton & Harehills
Starting totals	£108,472	£33,177.34	£18,177.33	£57,117.33
Nowell Mount Improvements	£2,000	£2,000	£0	£0
East Leeds Rugby Club Fencing Installation	£4,250	£4,250	£0	£0
Thackray Medical Museum Redevelopment	£5,000	£0	£0	£5,000
Getaway Girls Shutters	£5,000	£0	£0	£5,000
Seacroft Gardens Playground	£6,000	£0	£6,000	£0
Cycling Opportunities	£8,500	£5,666.66	£2,833.34	£0
Total spend: Area wide + ward projects	£30,750	£11,916.66	£8,833.34	£10,000
Capital injection November 2020	£2,100	£700	£700	£700
Balance remaining (per ward)	£79,822	£21,960.68	£10,043.99	£47,817.33

Capital projects for consideration for pre-approval from the Inner East Community Committee 2021/2022 Capital allocation.

46. **Project Title:** St Cyprian's Boiler Replacement

Name of Group or Organisation: St Cyprian's Church

Total Project Cost: £5,803.20

Amount proposed (Capital): £5,803.20 Burmantofts and Richmond Hill (£4,062.24); Gipton and Harehills (£1,740.96)

Wards covered: Burmantofts and Richmond Hill; Gipton and Harehills

Project Description:

Funding to purchase and install a replacement boiler for the one that has broken at the church which will mean the church and church hall can open to the community and the various local groups and organisations that use the space.

Community Committee Priorities:

- Reduce health inequalities, promote healthy lifestyles and reduce social isolation

47. **Project Title:** Ashton Park Fencing Installation

Name of Group or Organisation: LCC Parks & Countryside

Total Project Cost: £10,800

Amount proposed (Capital): £10,800

Wards covered: Gipton and Harehills

Project Description:

The grant will be used to supply and install new fencing at Ashton Park. This forms part of improvements to the recreation space and will improve the aesthetics of the space encouraging more community use and creating a welcoming child friendly space for all users. The fencing will improve lines of sight into and out of the play and recreational area also. This will replace the existing palisade fencing with 1.8m black roll bar fencing on top of the wall on two sides of the park.

Community Committee Priorities:

- Improve the local environment.

48. **Project Title:** Community Voices Equipment

Name of Group or Organisation: Fever FM

Total Project Cost: £15,688.63

Amount proposed (Capital): £3,000

Amount proposed (Wellbeing): £1,000

Wards covered: Gipton and Harehills

Project Description:

This is a split funding request from Wellbeing and Capital funds to cover the two elements of the funding request. Wellbeing funds will be used to help Fever FM upgrade their current radio station software and Capital funds will be used to purchase new equipment (PC, keyboard and monitor.)

Community Committee Priorities:

- Improve community confidence, reassurance and cohesion
- Provide activities for young people and give them a voice and influence
- Improve employment opportunities and access to training, and support innovation and community enterprise.

Community Infrastructure Levy (CIL) Budget 2020/2021

49. The Community Committee is asked to note that there is £84,051.06 currently available to spend. The breakdown of funds available to spend are as follows; Burmantofts & Richmond Hill: **£24,385.71**, Gipton & Harehills: **£36,649.65** and Killingbeck & Seacroft: **£23,015.71**, which is detailed in **Table 7**.

50. **TABLE 7: Community Infrastructure Levy (CIL) 2020/21**

	IE (£)	Burmantofts & Richmond Hill	Gipton & Harehills	Killingbeck & Seacroft
Remaining Balance March 2019	£101,081.98	£15,850.68	£70,750.62	£14,480.68
Injection April 2019	£16,160.39	£5,386.80	£5,386.80	£5,386.80
Injection November 2020	£9,444.69	£3,148.23	£3,148.23	£3,148.23
Starting Position 2020-2021	£126,687.06	£24,385.71	£79,285.65	£23,015.71
Gipton & Harehills Street Signs Refurbishment	£29,000.00		£29,000.00	
Banstead Park Improvements	£9,350.00		£9,350.00	
Ashton Park Improvements	£4,286.00		£4,286.00	
Totals:	£42,636.00	£0.00	£42,636.00	£0.00
Remaining Balance:	£84,051.06	£24,385.71	£36,649.65	£23,015.71

CIL projects for consideration for pre-approval from the Inner East Community Committee 2021/22 CIL allocation.

51. **Project Title:** Sports Hall Refurbishment

Name of Group or Organisation: Leeds Islamic Centre

Total Project Cost: £6,426.00

Amount proposed (CIL): £3,213.00

Wards covered: Gipton and Harehills

Project Description:

The grant will be used to refurbish the existing community sports hall floor which has been in use for over 25 years by the community of Leeds and is at the point where it has lost its durability and cracks are beginning to show. The hall is used for a range of sports and youth activities and the group hope that an updated space will allow this activity to continue for many more years.

Community Committee Priorities:

- Reduce health inequalities, promote healthy lifestyles and reduce social isolation

- Provide activities for young people and give them a voice and influence

Corporate Considerations

Consultation and Engagement

52. The Community Committee has previously been consulted on the projects detailed within the report.

Equality and Diversity/Cohesion and Integration

53. All wellbeing funded projects are assessed in relation to Equality, Diversity, Cohesion and Integration. In addition, the Communities Team ensures that the wellbeing process complies with all relevant policies and legislation.

Council Polices and City Priorities

54. Projects submitted to the Community Committee for wellbeing funding are assessed to ensure that they are in line with Council and City priorities as set out in the following documents:

1. Vision for Leeds 2011 – 30
2. Best City Plan
3. Health and Wellbeing City Priorities Plan
4. Children and Young People's Plan
5. Safer and Stronger Communities Plan
6. Leeds Inclusive Growth Strategy

Resources and Value for Money

55. Aligning the distribution of community wellbeing funding to local priorities will help to ensure that the maximum benefit can be provided.

Legal Implications, Access to Information and Call In

56. There are no legal implications or access to information issues. This report is not subject to call in.

Risk Management

57. Risk implications and mitigation are considered on all wellbeing applications. Projects are assessed to ensure that applicants are able to deliver the intended benefits.

Conclusion

58. The Finance Report provides up to date information on the Community Committee's budget position.

Recommendations

59. Members are asked to:

- a. To note details of the Wellbeing Budget position (Table 1- paragraph 20)
- b. To consider and determine Wellbeing proposals (paragraphs 21-24)
- c. To note details of the Youth Activities Fund (YAF) position (Table 2- paragraph 36)
- d. To consider and determine YAF proposal (paragraph 37)
- e. To note details of the Small Grants & Skips Budget (Table 3- paragraph 39)
- f. To note details of the Covid-19 ward based Budget (Table 4- paragraph 41)
- g. To note details of the Covid-19 government grant Budget (Table 5- paragraph 43)
- h. To note details of the Capital Budget (Table 6- paragraph 45)
- i. To consider and determine Capital proposals (paragraph 46-48)
- j. To note details of the Community Infrastructure Levy Budget (Table 7- paragraph 50)
- k. To consider and determine CIL proposal (paragraph 51)

Corporate Considerations

Consultation and Engagement

60. The Community Committee has previously been consulted on the projects detailed within the report.

Equality and Diversity/Cohesion and Integration

61. All wellbeing funded projects are assessed in relation to Equality, Diversity, Cohesion and Integration. In addition, the Communities Team ensures that the wellbeing process complies with all relevant policies and legislation.

Council Polices and City Priorities

62. Projects submitted to the Community Committee for wellbeing funding are assessed to ensure that they are in line with Council and City priorities as set out in the following documents:

7. Vision for Leeds 2011 – 30
8. Best City Plan
9. Health and Wellbeing City Priorities Plan
10. Children and Young People's Plan
11. Safer and Stronger Communities Plan
12. Leeds Inclusive Growth Strategy

Resources and Value for Money

63. Aligning the distribution of community wellbeing funding to local priorities will help to ensure that the maximum benefit can be provided.

Legal Implications, Access to Information and Call In

64. There are no legal implications or access to information issues. This report is not subject to call in.

Risk Management

65. Risk implications and mitigation are considered on all wellbeing applications. Projects are assessed to ensure that applicants are able to deliver the intended benefits.

Conclusion

66. The Finance Report provides up to date information on the Community Committee's budget position.

Recommendations

67. Members are asked to:

- l. To note details of the Wellbeing Budget position (Table 1- paragraph 20)
- m. To consider and determine Wellbeing proposals (paragraphs 21-24)
- n. To note details of the Youth Activities Fund (YAF) position (Table 2- paragraph 36)
- o. To consider and determine YAF proposal (paragraph 37)
- p. To note details of the Small Grants & Skips Budget (Table 3- paragraph 39)
- q. To note details of the Covid-19 ward based Budget (Table 4- paragraph 41)
- r. To note details of the Covid-19 government grant Budget (Table 5- paragraph 43)
- s. To note details of the Capital Budget (Table 6- paragraph 45)
- t. To consider and determine Capital proposals (paragraph 46-48)
- u. To note details of the Community Infrastructure Levy Budget (Table 7- paragraph 50)
- v. To consider and determine CIL proposal (paragraph 51)

This page is intentionally left blank



Report of the City Solicitor

Report to: Inner East Community Committee (Burmantofts and Richmond Hill, Gipton and Harehills & Killingbeck and Seacroft)

Report author: Gerard Watson, Principal Governance Officer, 0113 37 88664

Date: Wednesday 17th March 2021

For decision

Dates, Times and Venues of Community Committee Meetings 2021/2022

Purpose of report

1. The purpose of this report is to request Members to give consideration to agreeing the proposed Community Committee meeting schedule for the 2021/2022 municipal year.

Main issues

Meeting Schedule

2. The Procedure Rules state that there shall be at least four ordinary or 'business' meetings of each Community Committee in each municipal year and that a schedule of meetings will be approved by each Community Committee.
3. This report seeks to schedule 4 Community Committee business meetings for 2021/22, in line with previous practice. The proposed schedule has been compiled with a view to ensuring an even spread of Committee meetings throughout the forthcoming municipal year.
4. Members are also asked to note that the schedule does not set out any Community Committee themed workshops, as these can be determined by the Committee throughout the municipal year, should Members feel appropriate.

5. The following provisional dates have been agreed in consultation with the Localities team. As referenced earlier, this report seeks to schedule 4 Community Committee business meetings for 2021/22, in line with previous practice.
6. For this municipal year, efforts have been made to try and avoid scheduling multiple Community Committee meetings on the same day, in order to allow for attending officers to be present at as many Committees as possible when taking reports to all 10 Committees during a cycle. Also taken into consideration this year are the practicalities around the webcasting of meetings, and the fact that we can only webcast a maximum of 2 meetings simultaneously.
7. In terms of the format of the Community Committee meetings, as Members will be aware, over the course of 2020/21 in response to the pandemic and the restrictions in place, Community Committees initially met remotely on a consultative basis, and then remotely on a formal, decision making basis. Regarding how formal Community Committees, and other committees will meet moving forward, this is a matter which will continue to be monitored in light of how the pandemic develops and the local and national restrictions / legislation in place at the time. This will also include consideration being given to any changes made by Government to the current regulations which enable formal, decision making meetings of the Local Authority to take place remotely.
8. The proposed meeting schedule for 2021/22 is as follows:
 - Wednesday 16 June 2021 at 6 pm
 - Wednesday 8 September 2021 at 6 pm
 - Wednesday 15 December 2021 at 6 pm
 - Wednesday 16 March 2022 at 6 pm

Meeting Days, Times and Venues

9. Currently, the Committee meets on a Wednesday at 6 pm - and the proposed dates (above) reflect this pattern.
10. Meeting on set days and times has the advantage of certainty and regularity, which assists people to plan their schedules. The downside might be that it could serve to exclude certain people i.e. members of the public, for instance, who have other regular commitments on that particular day or who might prefer either a morning or afternoon meeting or a meeting immediately after normal working hours. Therefore, the Committee may wish to give consideration to meeting start times which would maximise the accessibility of the meetings for the community.

Options

11. Members are asked to consider whether they are agreeable with the proposed meeting schedule (above).

Corporate considerations

10a. Consultation and engagement

The submission of this report to the Community Committee forms part of the consultation process as it seeks the views of Elected Members with respect to the Community Committee meeting schedule.

In compiling the proposed schedule of meeting dates and times, the current Community Committee Chair and colleagues within the Localities team have been consulted.

10b. Equality and diversity / cohesion and integration

In considering the matters detailed, Members may wish to give consideration to ensuring that the Community Committee meeting arrangements are accessible to all groups within the community.

10c. Legal implications, access to information and call in

In line with Executive and Decision Making Procedure Rules, the power to Call In decisions does not extend to decisions taken by Community Committees.

Conclusion

11. The Procedure Rules require that each Community Committee will agree its schedule of meetings and that there shall be at least 4 business meetings per municipal year. With this, Members are asked to agree the arrangements for 2021/22.

Recommendations

12. Members are requested to consider the options detailed within the report and to consider and agree the Committee's meeting schedule for the 2021/22 municipal year (as detailed at paragraph 8).

Background information

- Not applicable

This page is intentionally left blank